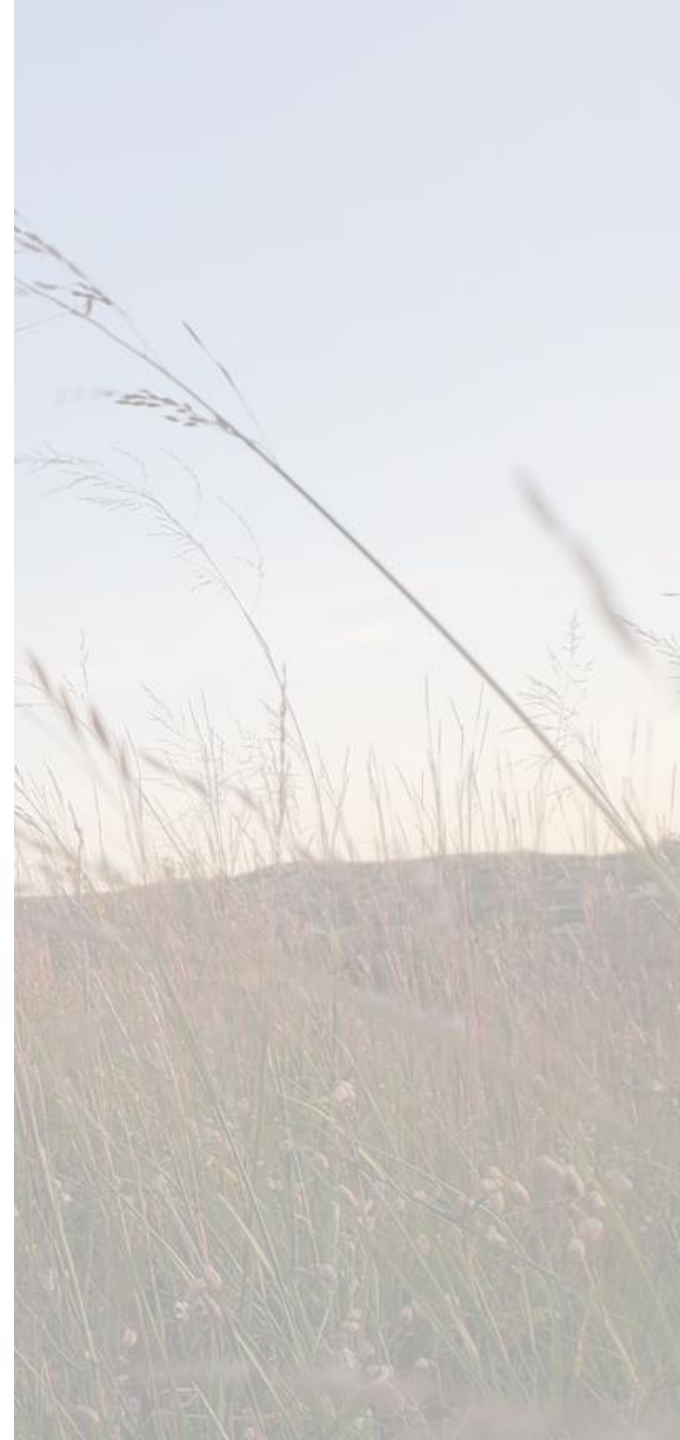




Relmagine Trash

Kent County's Journey Toward Zero
EGLE U.P. Materials Management Forum 2023



Grand Rapids Herald



July 24, 1897



Source: City of Grand Rapids Community Archives and Research Center



Source: City of Grand Rapids Community Archives and Research Center



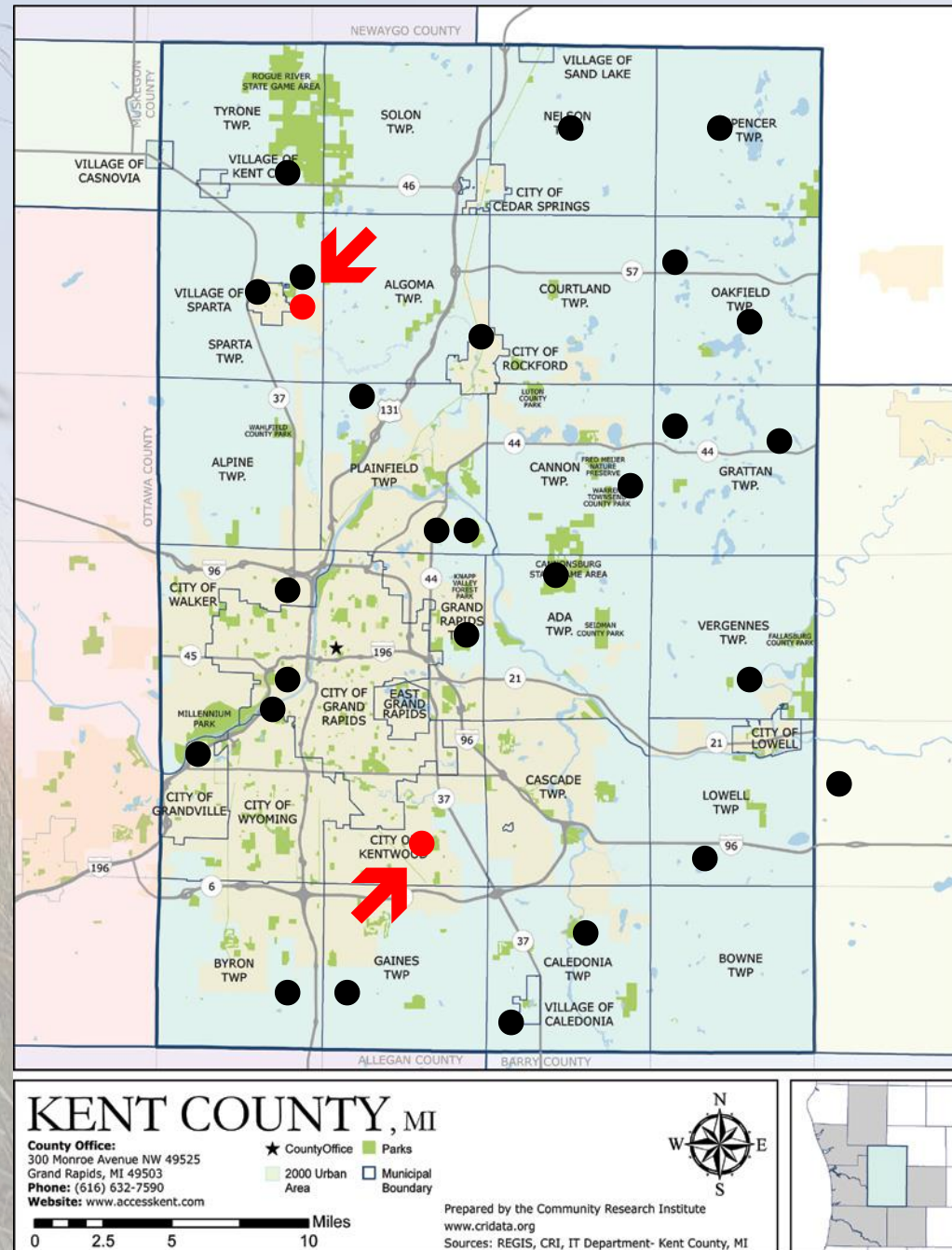
Source: City of Grand Rapids Community Archives and Research Center



Source: City of Grand Rapids Community Archives and Research Center



By 1965, Kent County had 29 local, municipal and privately owned open dumps.



Kent County Department of Public Works



Recycling & Education Center



South Kent Landfill



Waste-to-Energy Facility



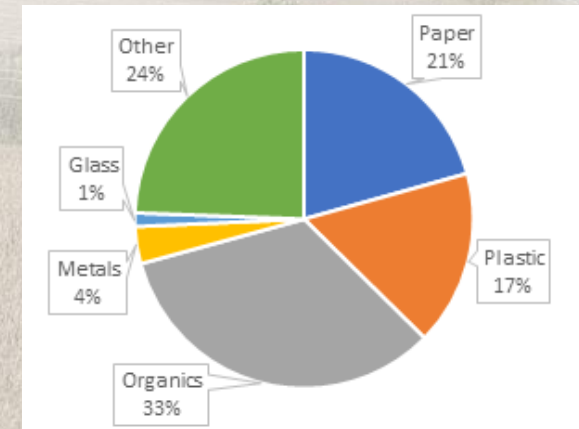
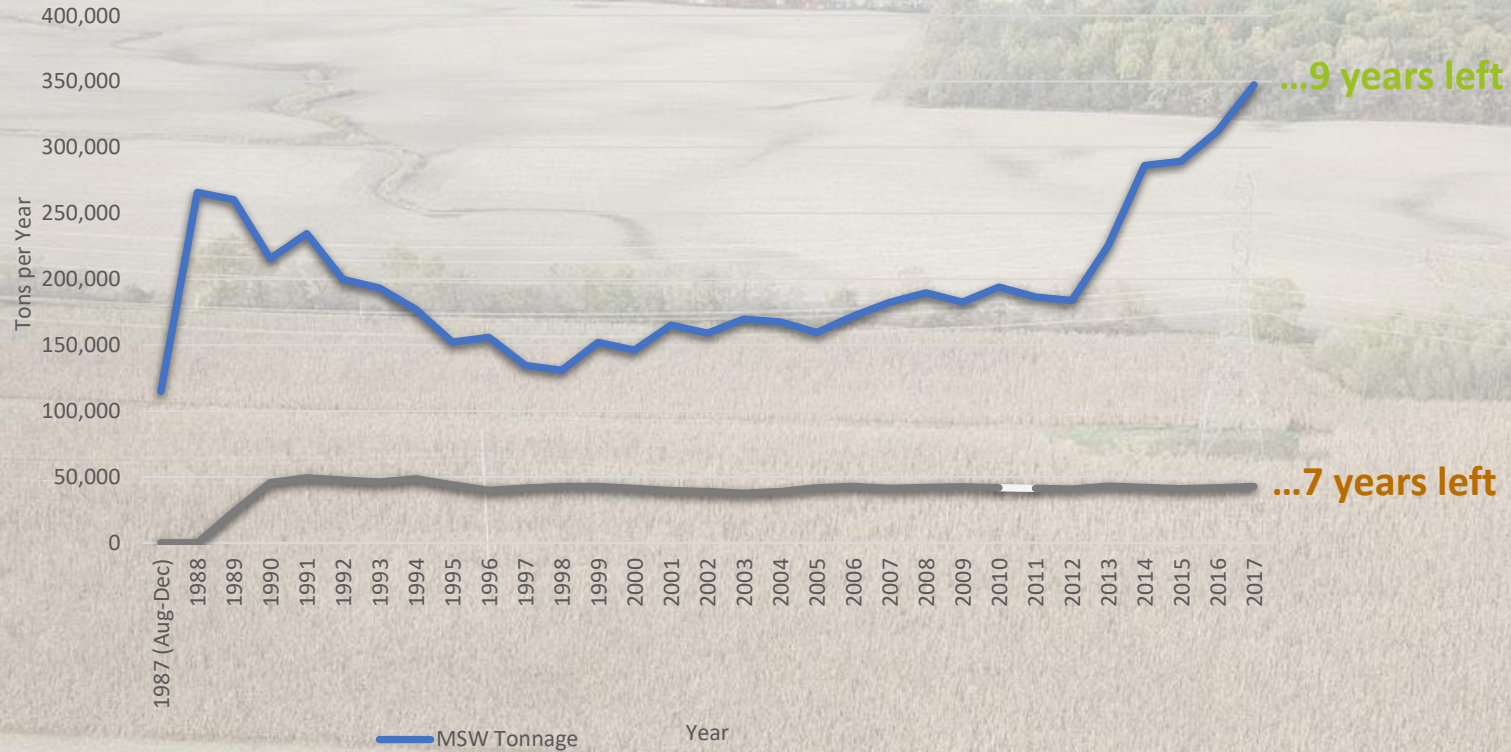
North Kent Transfer Station



**KENT COUNTY
DEPARTMENT OF
PUBLIC WORKS**



South Kent Landfill Tonnage (MSW and Ash)





Landfilling 2 million CY3 annually



**KENT COUNTY
DEPARTMENT OF
PUBLIC WORKS**



Landfilling is a Waste



**KENT COUNTY
DEPARTMENT OF
PUBLIC WORKS**

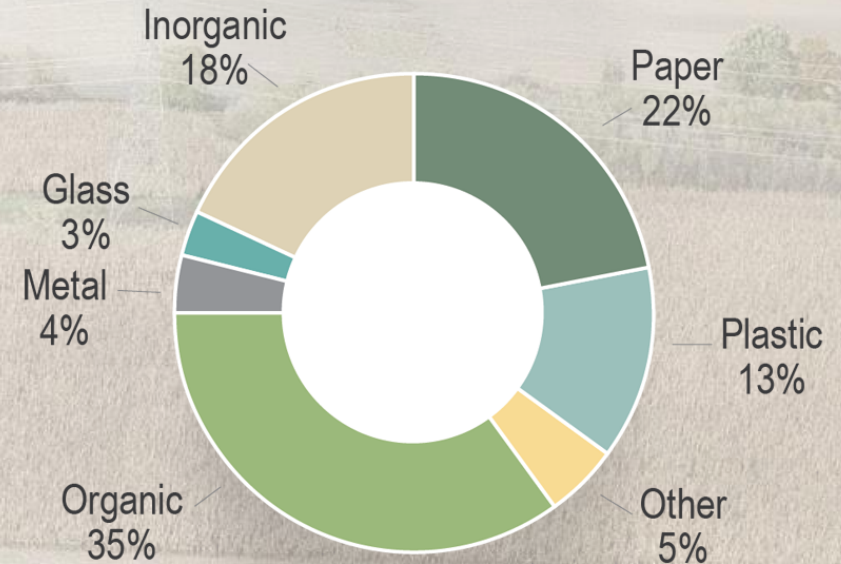


**KENT COUNTY
DEPARTMENT OF
PUBLIC WORKS**

2015: WMSBF Waste Characterization Study



Kent Municipal Solid Waste
Composition (mean % by weight)



Source: West Michigan Sustainable Business Forum
2016 Michigan MSW Valuation Study. wmsbf.org/msw

Status of Recycling in Kent County

Only 25% of residential recycling in Kent County is collected/processed into commodities.

The remaining 75,000 tons are thrown away.



**KENT COUNTY
DEPARTMENT OF
PUBLIC WORKS**

Landfilling will not be our legacy - 2016

2020



REDUCE LANDFILL WASTE
20% by 2020 | 90% by 2030

2030



Kent County Sustainable Business Park



**KENT COUNTY
DEPARTMENT OF
PUBLIC WORKS**



- POTENTIAL SYSTEMS
- PHASE 1 PUD
 - PHASE 2 PUD
 - DEDICATED/PRESERVED OPEN SPACE
 - FUTURE/RESERVED FOR MDOT RIGHT-OF-WAY
 - STORMWATER MANAGEMENT AREA
 - REGULATED WETLAND AREA (7.8 ACRES)
 - PUBLIC/STAFF ROADWAY
 - TRUCK TRAFFIC ROADWAY

CONCEPTUAL PLAN

THE LAND USE AND LAYOUT INDICATED IS CONCEPTUAL IN NATURE



Kent County Sustainable Business Park

Conceptual Plan 2C

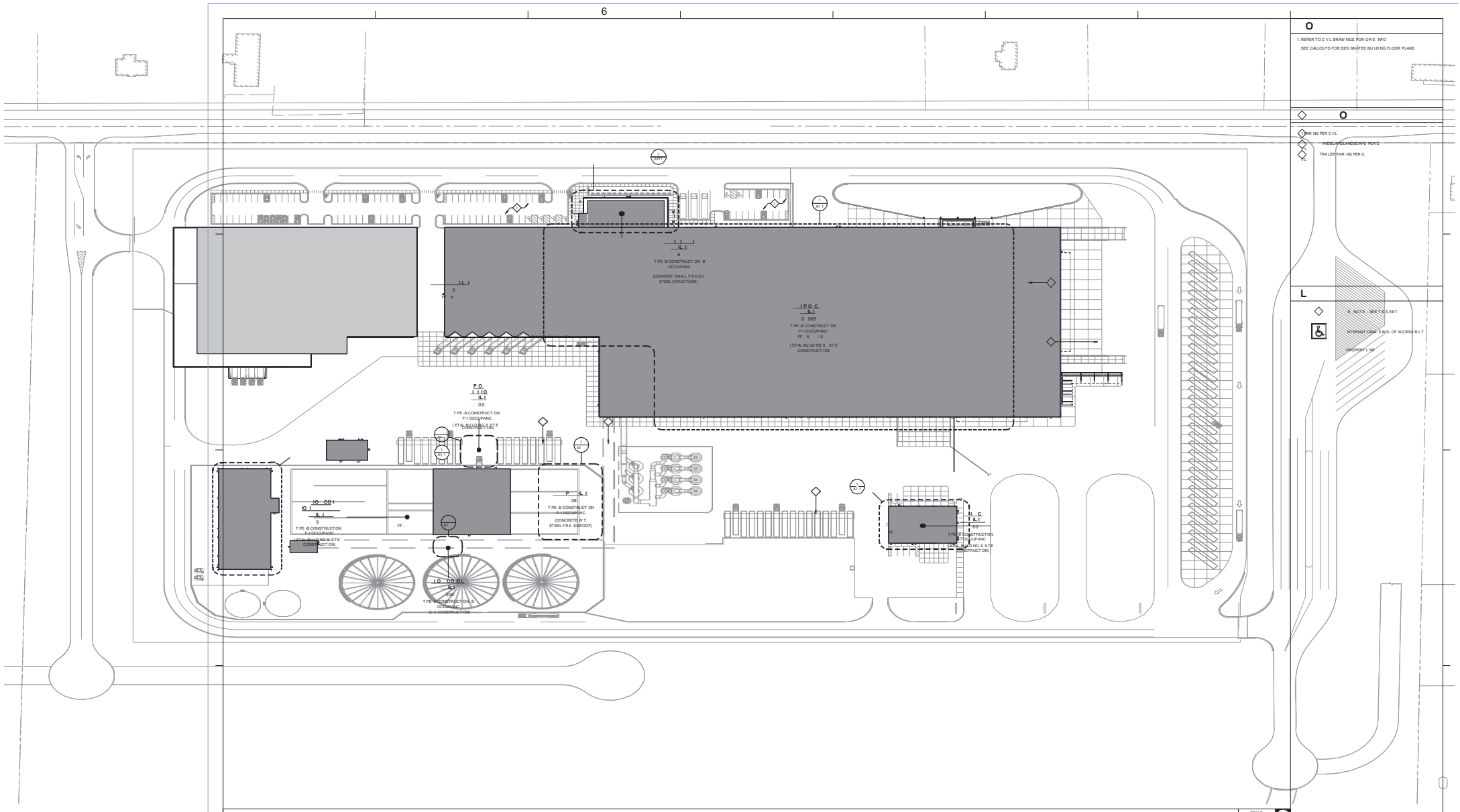


November 2021

191480



**KENT COUNTY
DEPARTMENT OF
PUBLIC WORKS**

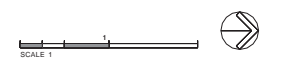


1. REFER TO V.L. DRAWINGS FOR ORIENT. INFO
SEE CALLOUTS FOR DESIGNATED BUILDING FLOOR PLANS

PAR NG PER C.V.L.
HOSI-SCAPESCAPE PER C
TRAILER PAR NG PER C

E. NOTE - SEE THIS SHEET
INVERT (G.M.) 5.5% OF ACCESS B.L.T.
PROPERTY LINE

NO.	REVISION	DATE



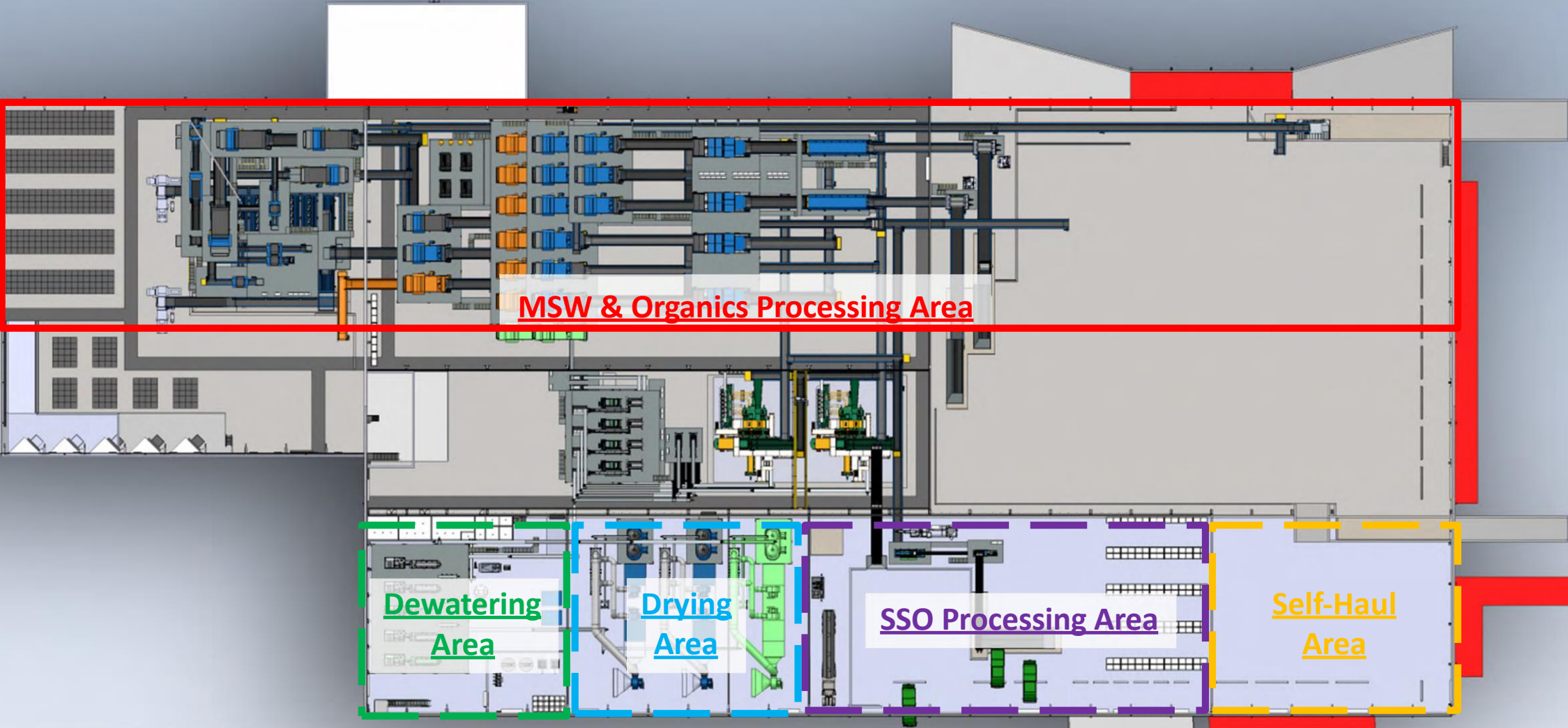
C I C L I C P L

SCALE 1:1000

CO IO CILI

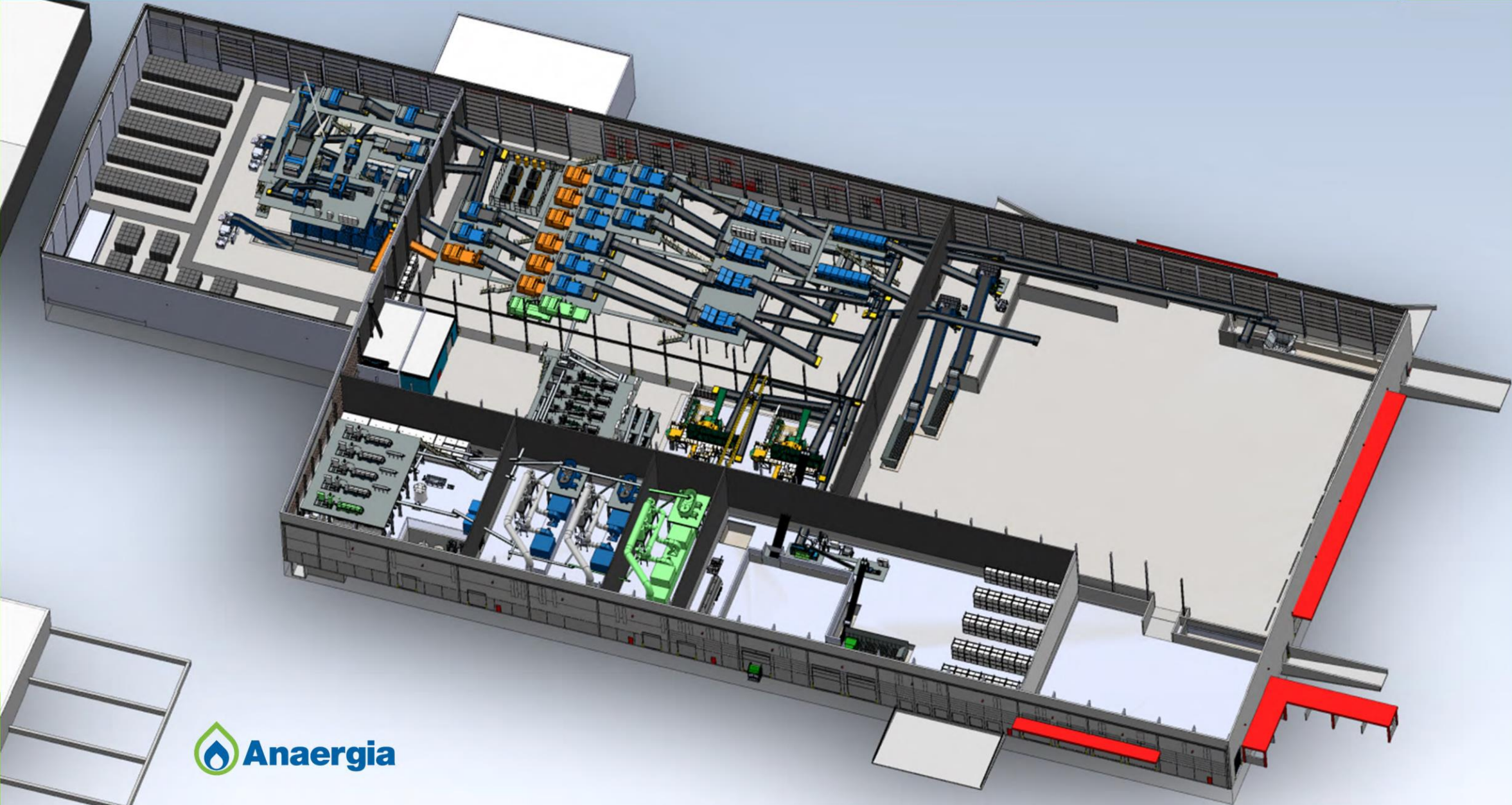
C I C L I P L

Kent County Bioenergy Facility

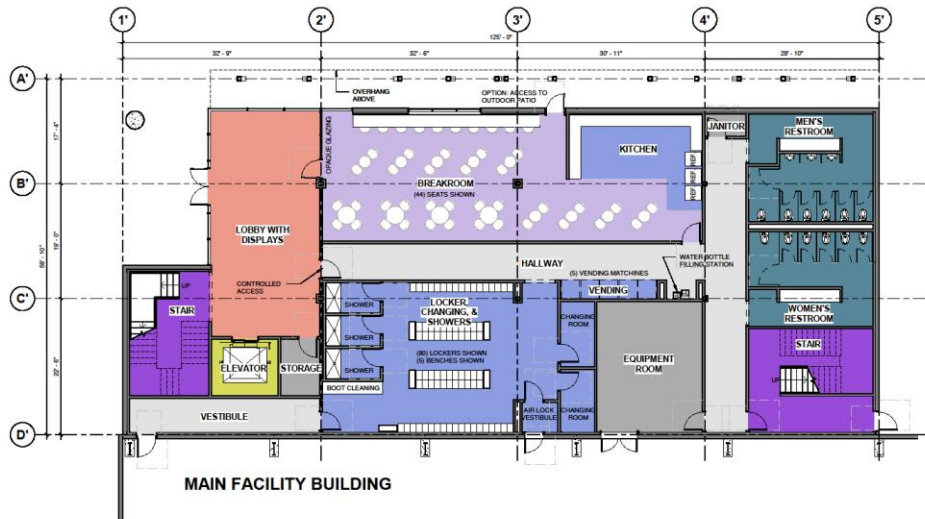


Anaergia

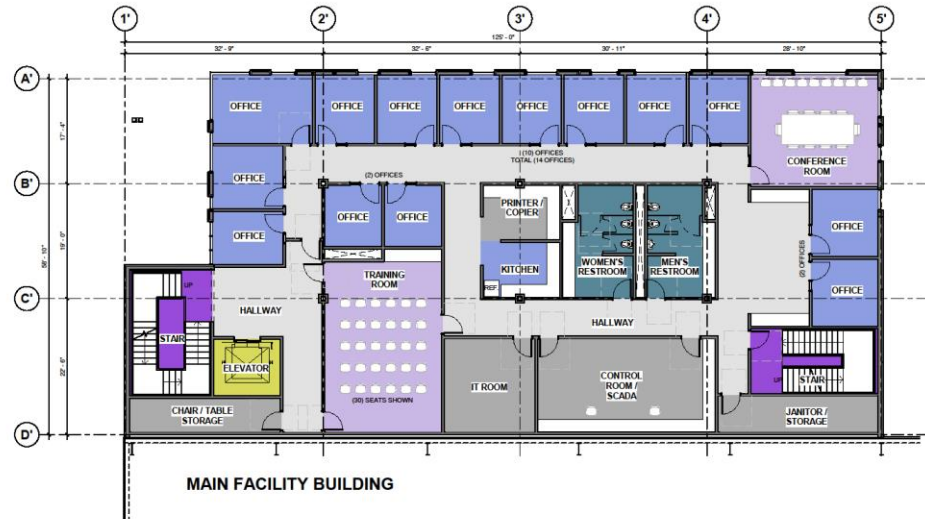
Kent County Bioenergy Facility



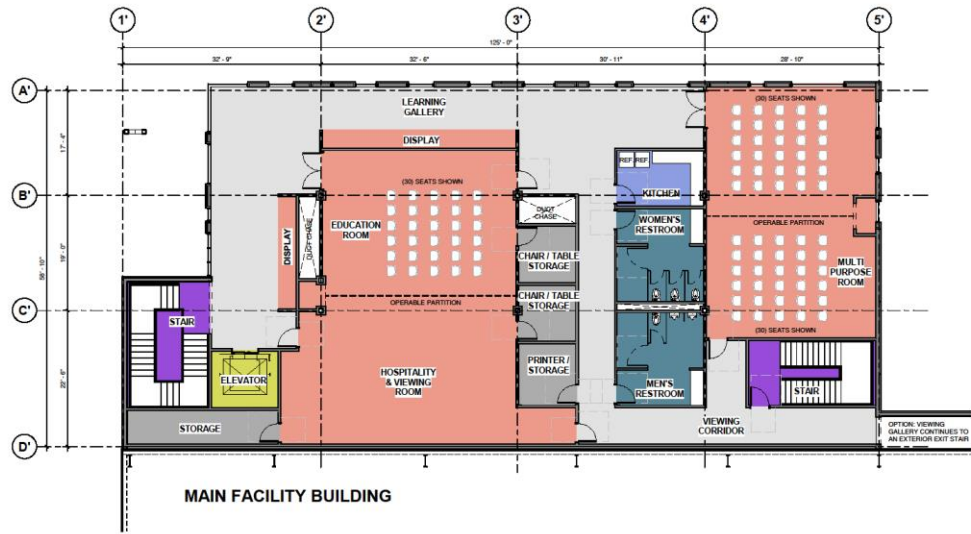
Anaergia



1 FIRST FLOOR
1/8" = 1'-0"



2 SECOND FLOOR
1/8" = 1'-0"



3 THIRD FLOOR
1/8" = 1'-0"



51% Landfill Diversion + Outputs:



Fertilizer



Renewable
Natural Gas



Recyclable
Commodities

Waste Characterization Study

1M tons of commodities to be recovered from waste stream over next 25 years.

\$300M value.

(metal, plastic, glass, paper and old corrugated cardboard)

Kent County Department of Public Works
2021 Municipal Solid Waste Characterization Study



March 2022

Prepared for:

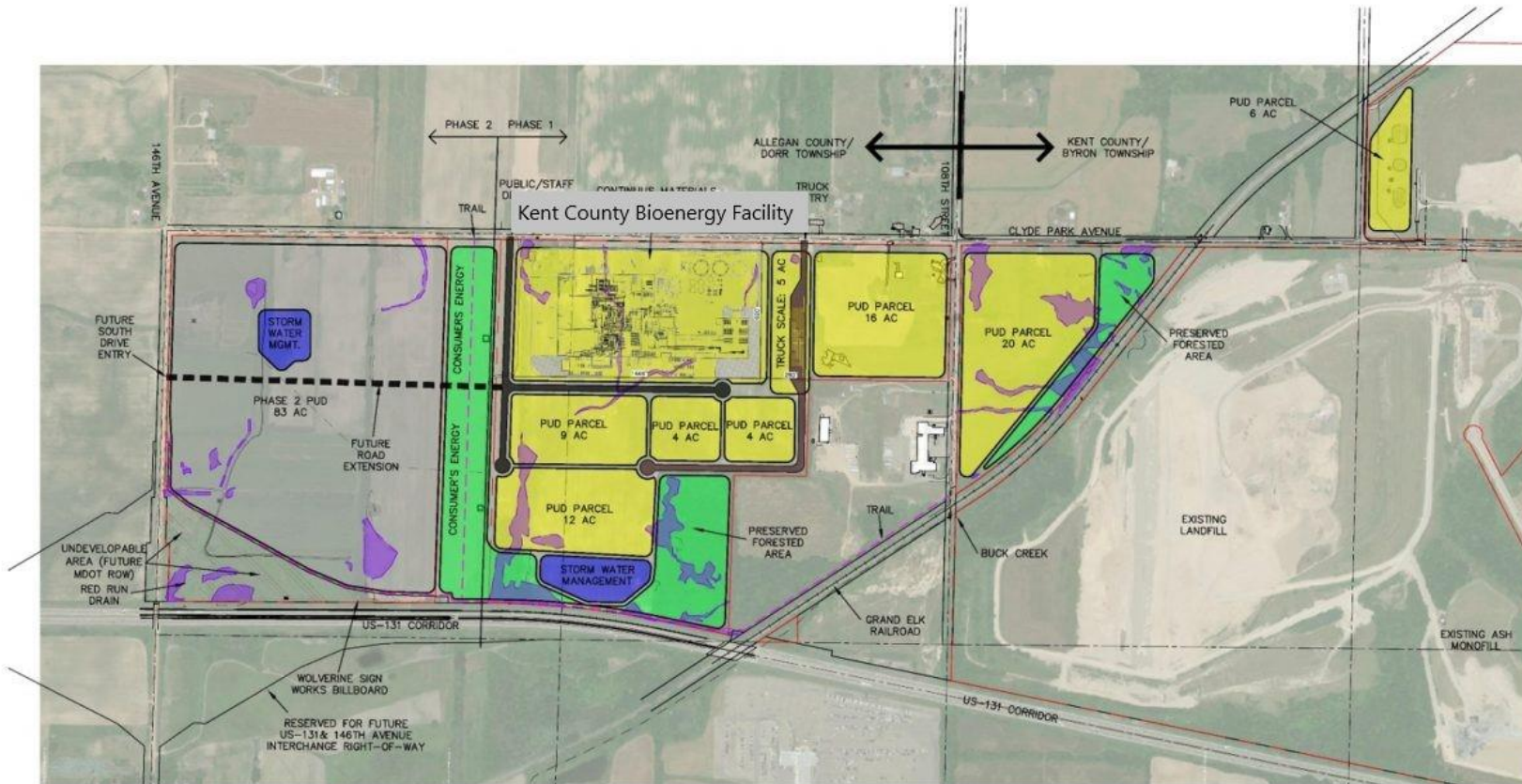
Darwin J. Baas
Director
Department of Public Works
Kent County, Michigan
1045 Wealthy Street SW
Grand Rapids MI 49504

Prepared by:

Bradley Kelly
Senior Project Engineer
Gershman, Brickner & Bratton, Inc.
2010 Corporate Ridge, Suite 510
McLean, VA 22102



**KENT COUNTY
DEPARTMENT OF
PUBLIC WORKS**



- POTENTIAL SYSTEMS**
- PHASE 1 PUD
 - PHASE 2 PUD
 - DEDICATED/PRESERVED OPEN SPACE
 - FUTURE/RESERVED FOR MDOT RIGHT-OF-WAY
 - STORMWATER MANAGEMENT AREA
 - REGULATED WETLAND AREA (7.8 ACRES)
 - PUBLIC/STAFF ROADWAY
 - TRUCK TRAFFIC ROADWAY

CONCEPTUAL PLAN

THE LAND USE AND LAYOUT INDICATED IS CONCEPTUAL IN NATURE



Kent County Sustainable Business Park

Conceptual Plan 2C



November 2021

191480



**KENT COUNTY
DEPARTMENT OF
PUBLIC WORKS**

2020



REDUCE LANDFILL WASTE
20% by 2020 | 90% by 2030

2030



KENT COUNTY
DEPARTMENT OF
PUBLIC WORKS