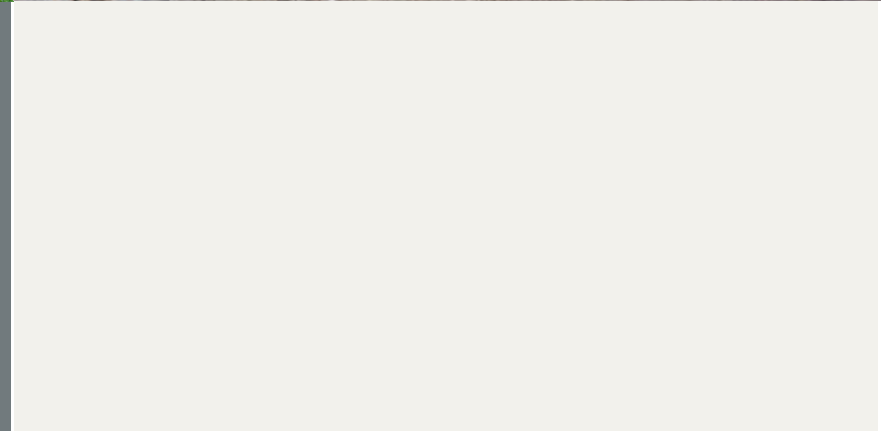


Part 115 & Managing Materials in Michigan



Michigan Recycling Coalition

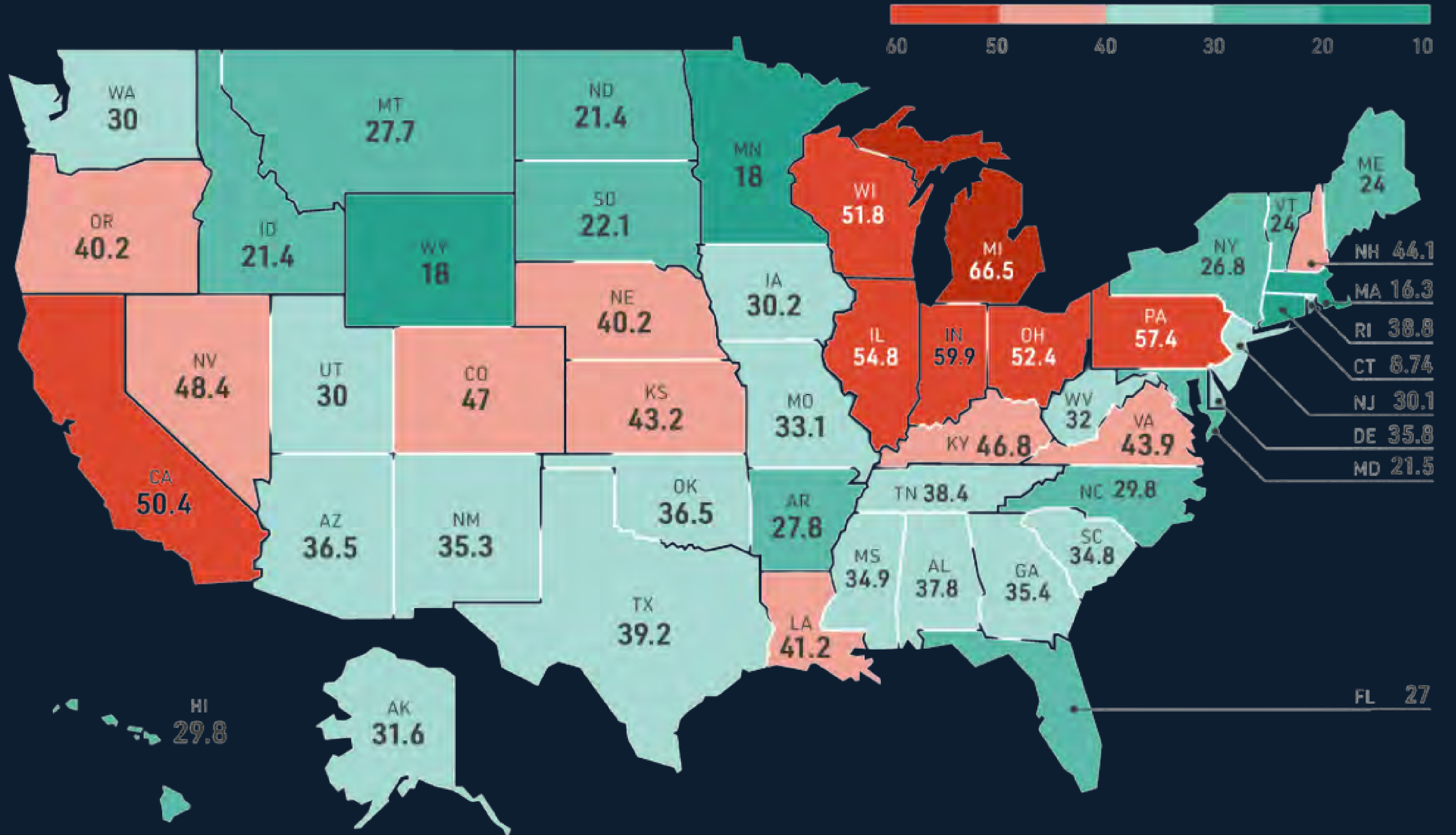
Fostering sustainability by leading, educating, and mobilizing businesses, governments, nonprofits, and individuals to advance their own and collective resource use and recovery initiatives in Michigan.





TONS OF WASTE IN LANDFILLS PER PERSON, BY STATE

Source: EPA, United States Census Bureau



Michiganders
spend \$1B+
to manage waste
each year



We're paying to landfill

\$600M

of material
that could be
recovered for
recycling
each year



Michigan now



Michigan's potential



- **138k employed in recycling**
- **\$9.08B in annual labor revenue from recycling**
- **Recycling will create \$33.8B in economic output**

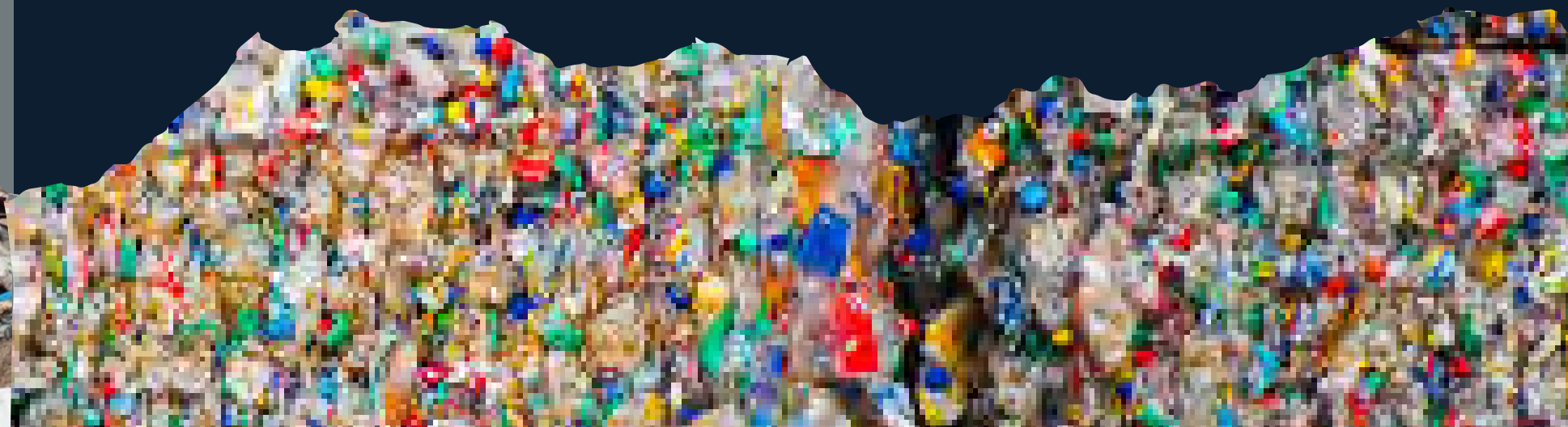
Disposal Capacity

County planning has become a way to expand landfills.



Materials Management Capacity

It's time to prioritize productive uses of discarded materials.



GOALS



Remove policy preference for disposal



Assure capacity & siting - zoning & host approval



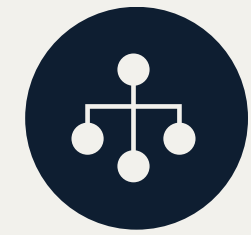
Preserve local right to limit landfill expansion



Re-engage local governments in planning & programs



Update regulations, tools & fees



Support diversion programming & infrastructure

What do you need to know



Requires counties to have a materials management plan



Local governments participation - majority approval in 120 days or on to EGLE approval



EGLE will call for plans in FY24



Counties will have 6 months to prepare for (CAA, tasks, regional outreach) & submit intent to plan



3-year planning process. Current SWP will be the law of the land until new MMP is approved by EGLE

Pre-Planning Activities

- To plan or not to plan?
- Board of Commissioners (BOC) identify County Approval Agency (CAA)
- Consult adjacent counties
 - Document interaction
 - Develop interlocal agreement for multi-county planning
- Envision the future

Planning

- Once plans are called for, 180 days to submit notice to EGLE
- Once EGLE is notified, 180 days to:
 - Appoint Designated Planning Agency (DPA)
 - Appoint Materials Management Planning Committee (MMPC)
 - Prepare work plan - DPA
 - Approve work plan - MMPC, EGLE

The Plan Will...

IDENTIFY...

all materials
management
facilities and
available capacity



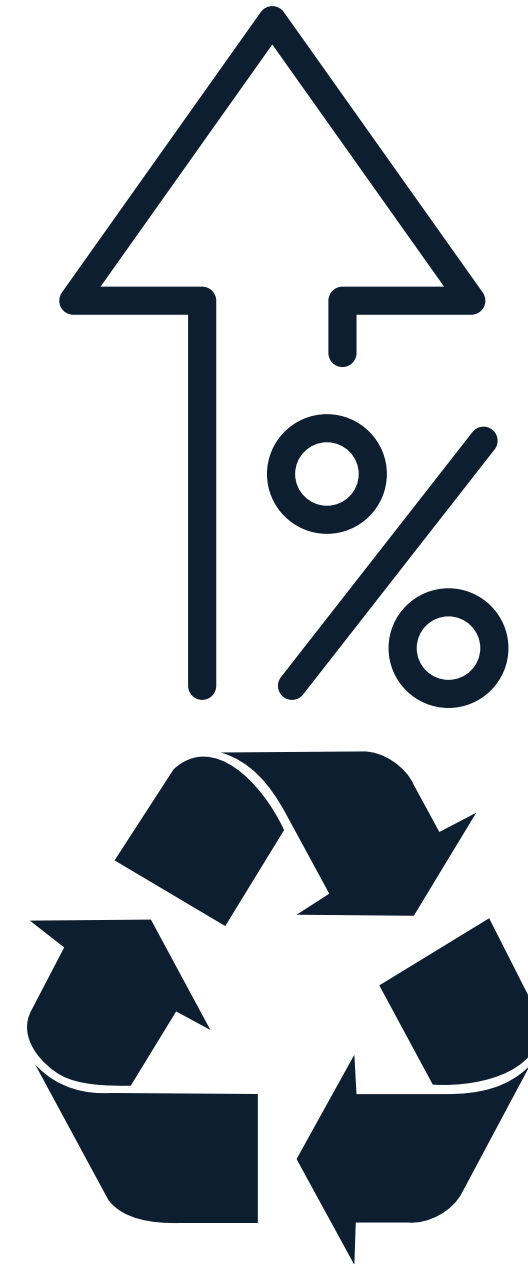
recycling, compost
and diversion
facilities will be
regulated and must
be consistent with
the plan

IDENTIFY...

current and needed
materials
management and
utilization capacity

ESTABLISH...

A current MSW
recycling rate



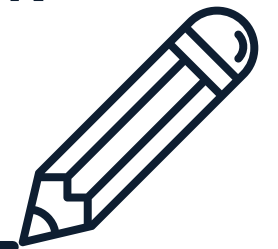
ESTABLISH...

County materials
management goals



Document all
organic &
inorganic
diversion goals

Plans for
meeting
benchmark
standards



The Plan Will...

CONTAIN...

enforceable mechanisms to achieve goals and responsibility for implementation



ENSURE...

all new facilities needed can be sited & developed

local zoning & host comm. approval approach preferred, pre-emption if required



non exclusionary zoning of needed facilities

INCLUDE...

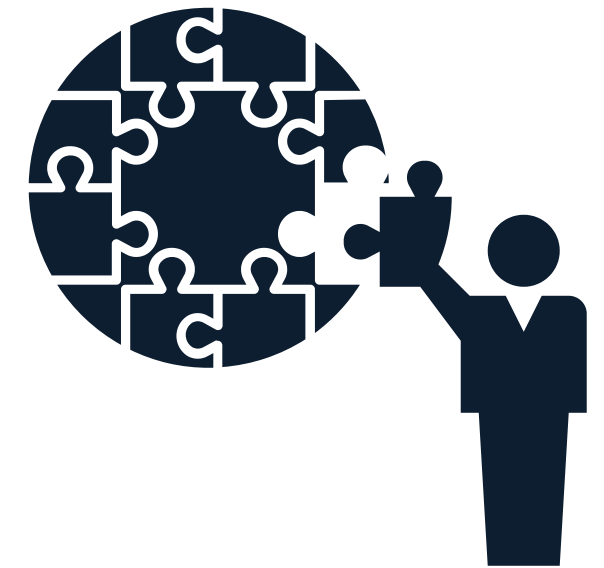


an overview of the transportation infrastructure for all managed materials



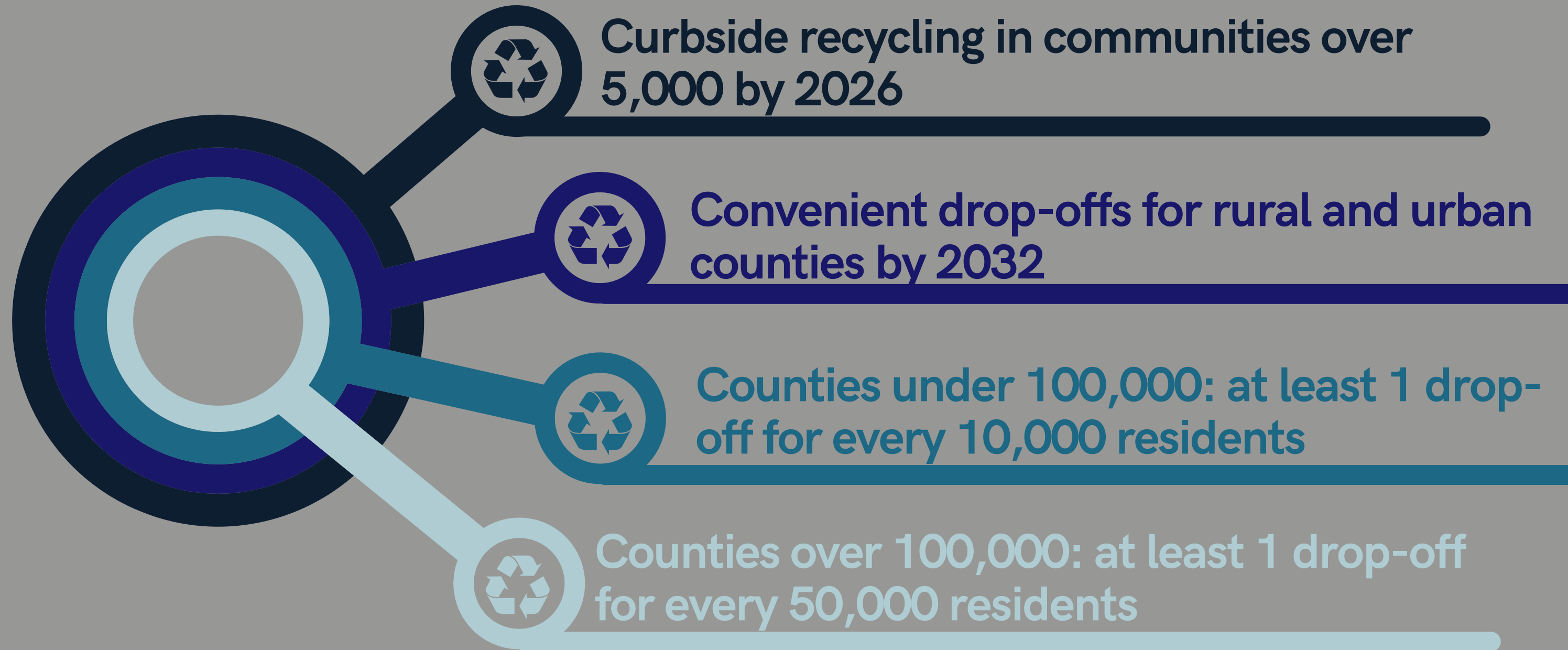
DOCUMENT...

an implementation strategy to achieve goals



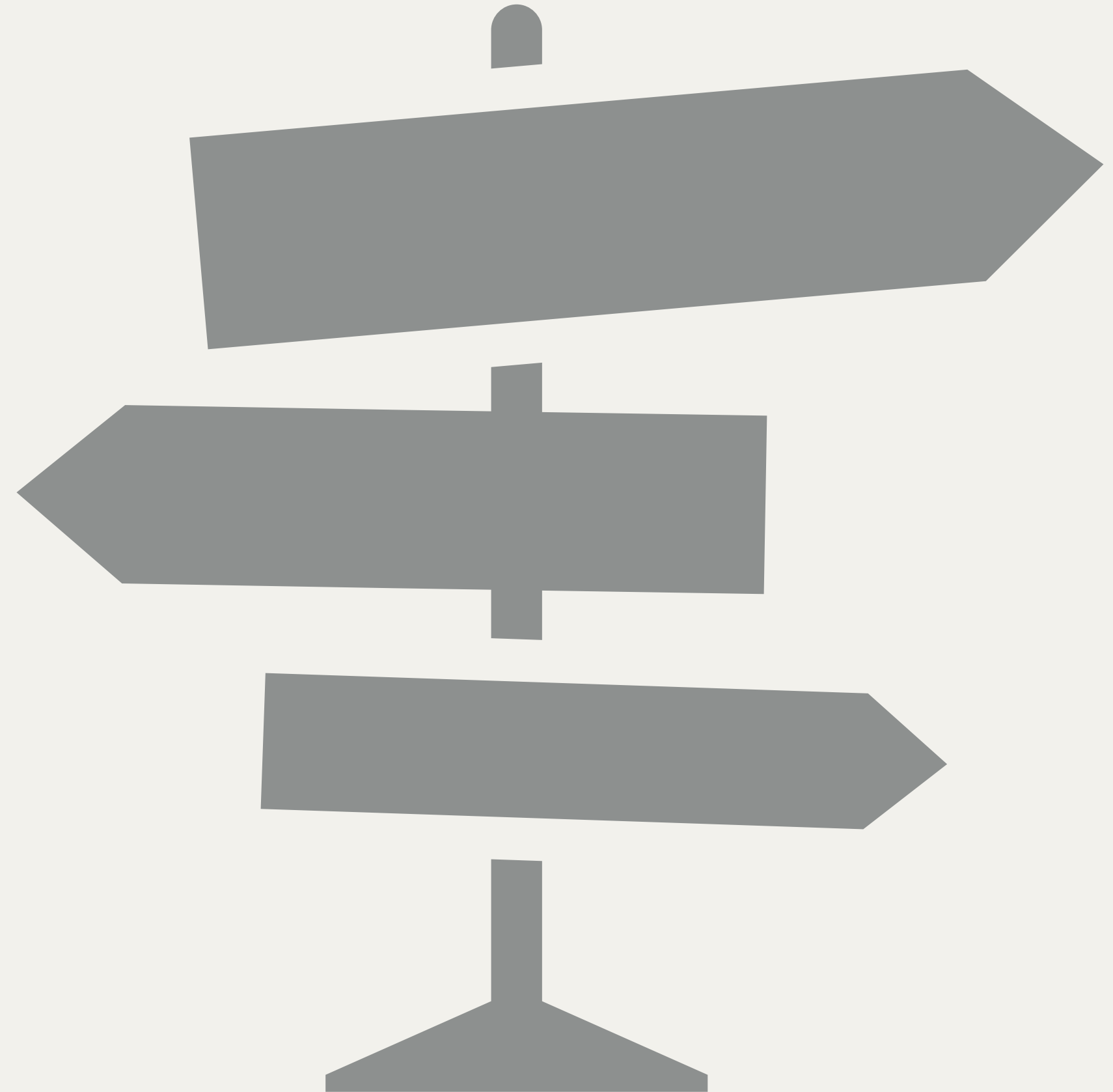
Funding comes when progress toward goals can be demonstrated

BENCHMARK RECYCLING STANDARDS

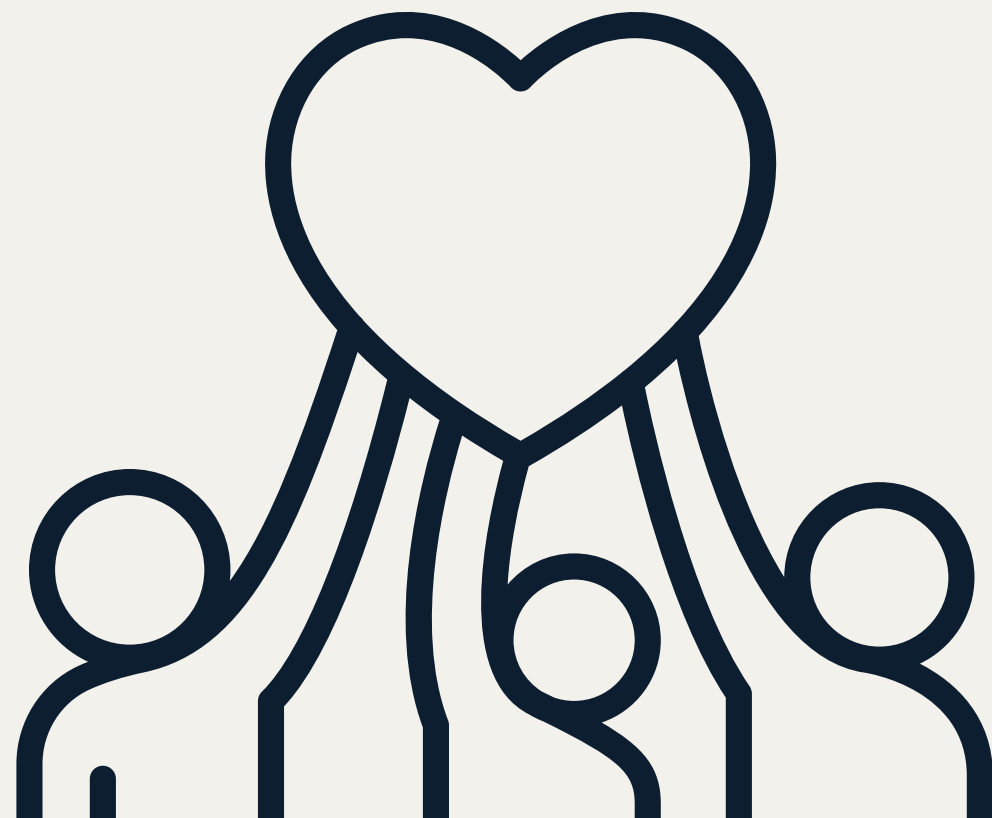
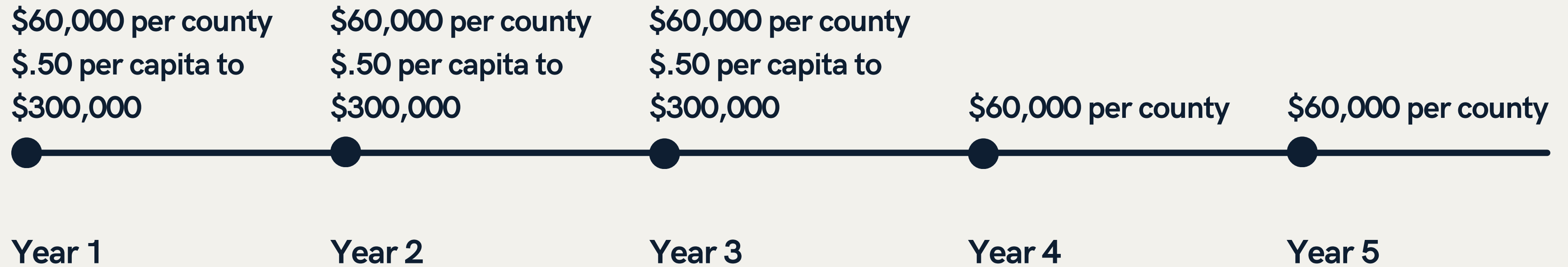


EGLE Developing Tools

- **Guidance documents**
- **Plan format, required by law**
- **Toolbox**
 - **agreements**
 - **ordinances**
 - **recycling guides**
 - **website resources**
 - **templates**
 - **worksheets & info pages**



5 Year Cycle of County Funding



Additional **\$10,000/yr** each county participating in **multi-county plans**

Costs of Curbside Collection Services

TRASH



Cost of Collection

+



Landfill
Disposal Fees

+



Landfill
Maintenance

+



Indefinite Oversight of
Landfill After Closure
(Post-Closure Legacy Costs)

RECYCLING



Cost of Collection

+



Cost of Residential
Education

+



MRF Processing Fee

+



Residual
Disposal Costs
(Contamination)

-



Commodity Sales

ORGANICS



Cost of Collection

+



Cost of Residential
Education

+



Compost Facility
Tip Fee

+



Residual
Disposal Costs
(Contamination)

+



Compost Sales

Average Value of a Ton at Northeast MRFs



Source: Northeast Recycling Council's "Northeast Recycling Market Report"

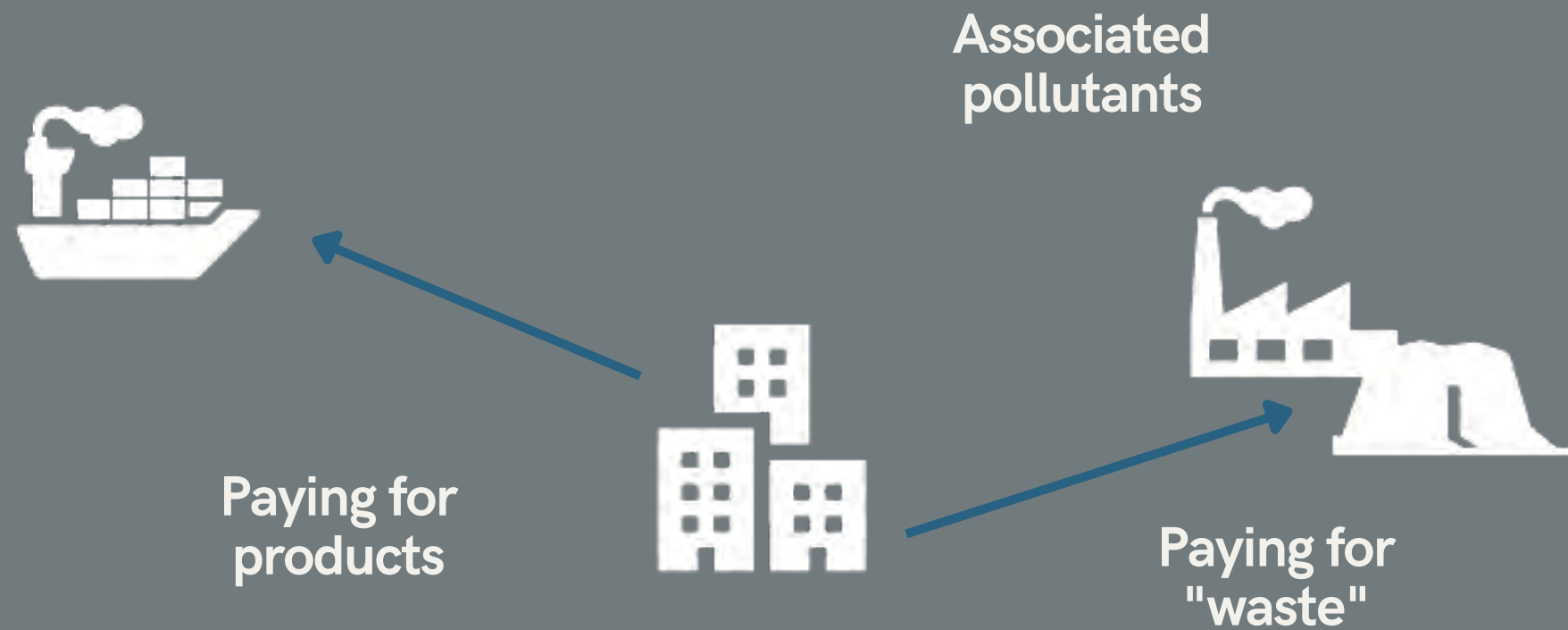
SECURED MARKETS

Promoting a circular
economy in
Michigan; Alpena
Regional MRF
Beneficiaries



KEEPING VALUE IN COMMUNITIES

- +Jobs
- +Lower emissions
- +Cleaner communities
- +Local supply chain



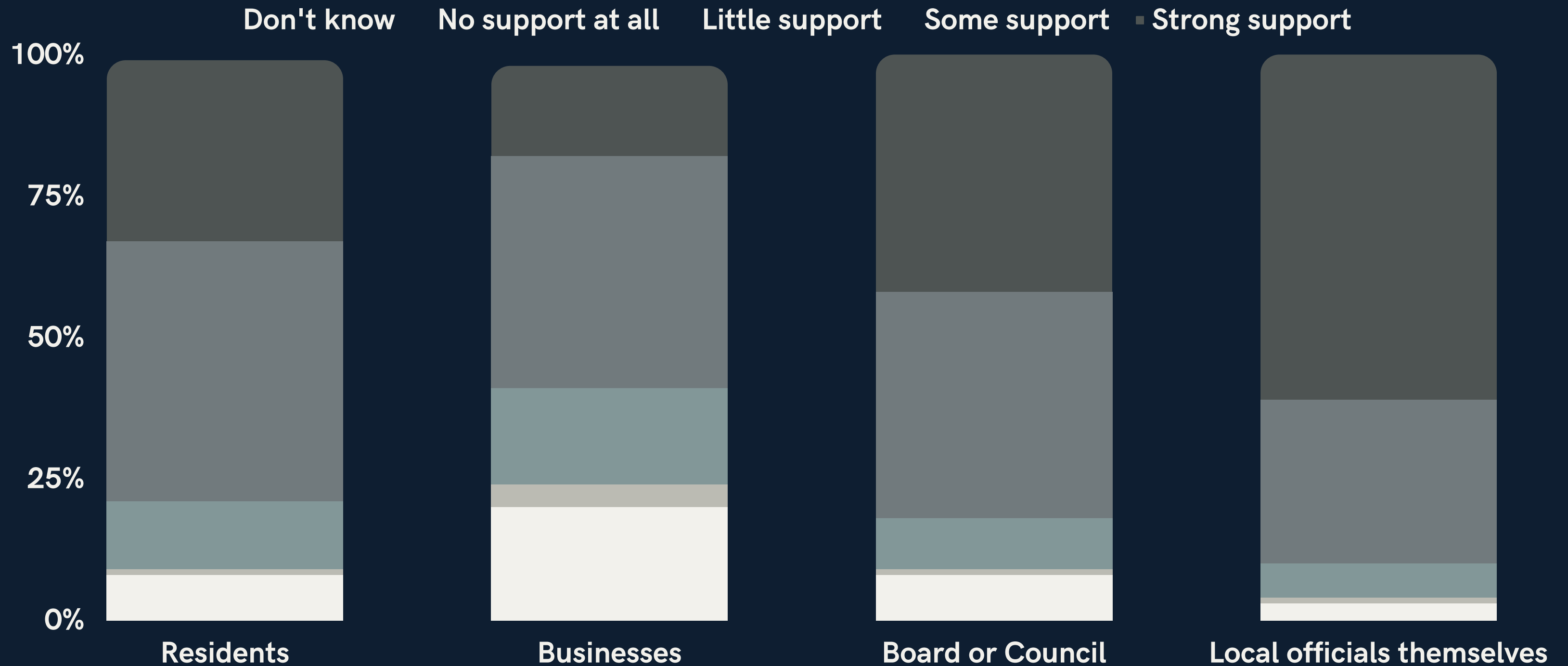
Value leaving communities



Value building communities

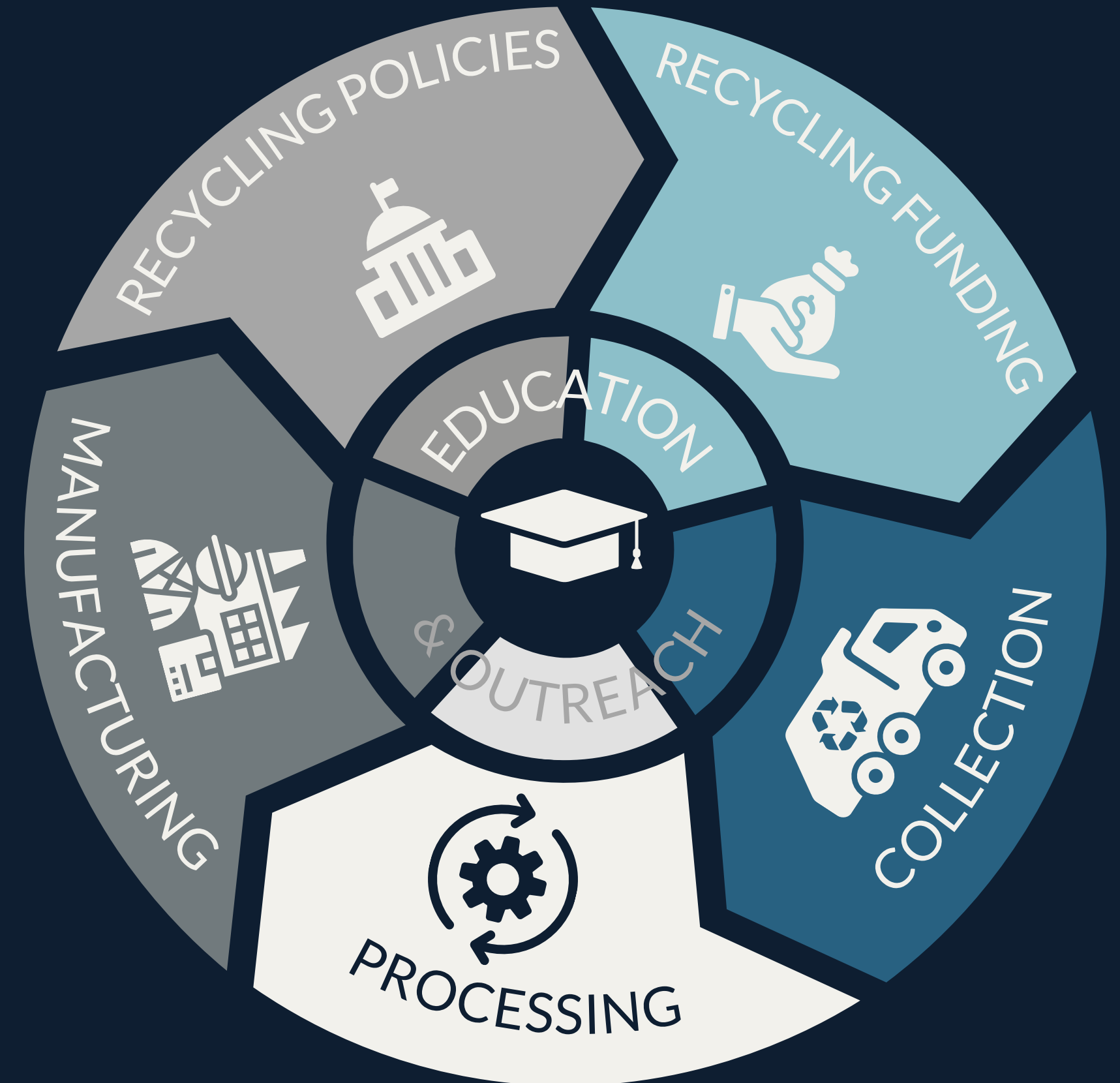
76% believe their residents support local recycling

Whether or not there are recycling services available how much support for local access to recycling, if any, would you say there is among the following groups?



Recycling Best Practices

- **Policies**
 - Volume-based pricing, PAYT
- **Collection**
 - Automated trucks
 - Covered, wheeled carts
 - Waste, recycling & organics
- **Education - Very important & everyone's job!**
 - Access, clear information, secure high participation
 - Low contamination
- **Cooperation and economies of scale are key to cost effective services**
- **Demand recycled-content packaging and products**



On average,
Michigan's
curbside
recycling
programs recycle
226 lbs.
per household
per year



but high participation curbside
programs across the country

recycle
550 lbs.
per household per year



Funding Mechanisms

- Host Community Agreements
 - fees can be imposed on materials managed by facilities to support programs/services
- Public Act 185
 - Public Works Assessment on local parcels
 - No voter approval required
- Public Act 69 & 138
 - With voter approval, winter tax collection from households/businesses up to \$50 annually
 - With voter approval, collect up to \$25 annually from households



Funding Mechanisms

**RECYCLING
AUTHORITIES** & *other
intergovernmental &
independent agreements*

CONTRACTS *to select a
single hauler*

MILLAGE *by city
or township*

SERVICE FEE *to offset
or cover service costs*

ORDINANCE *requiring
private haulers to meet
service requirements*

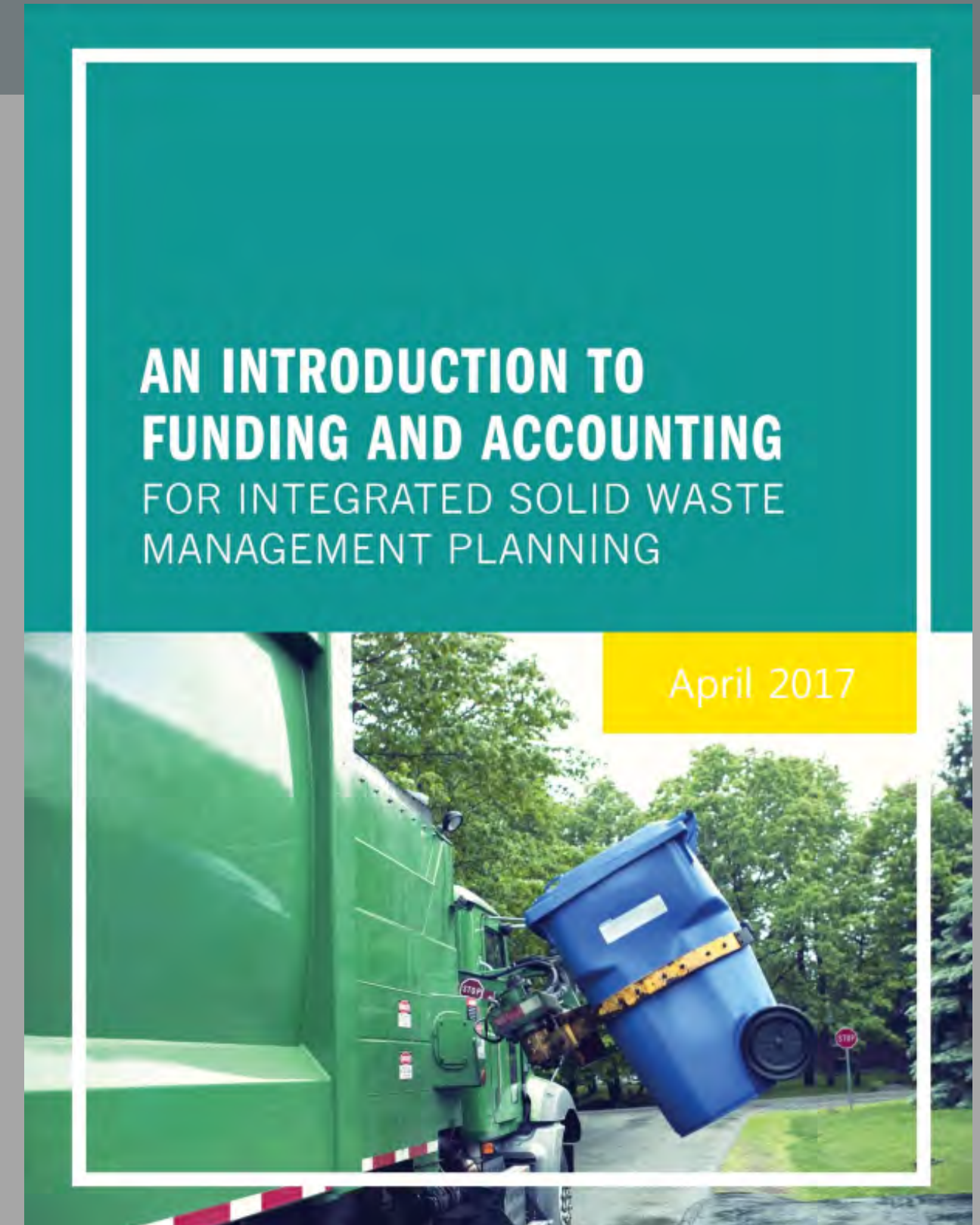
Voter Approved Mechanisms

- **Voter approved millage**
 - Any local unit of government can put a vote to the people to adopt a temporary or permanent millage to fund services
- **Fee**
 - Any local unit of government can put a vote to the people to collect a household fee through property taxes to cover services costs



MAKING THE CASE FOR RECYCLING: A Toolkit for Region 5 Local Governments

- **ACCESS** free tools
- **CUSTOMIZE** ISWM spreadsheet to identify program options
- **TRACK & ANALYZE** integrated solid waste management costs with accounting handbook
- **EXPOSE** hidden costs
- **IDENTIFY** funding sources
- **COMMUNICATE** integrated solid waste management costs to stakeholders & the public



**EGLE RECYCLING
GRANTS
NextCycle Michigan
to meet
GOALS & TARGETS**

- Increase state recycling rate
- Increase access & participation in recycling or food waste diversion
- Increase collection & processing capacity of recyclable/compostable materials
- Expand Michigan end markets



THE VOICE OF RECYCLING IN MICHIGAN



michiganrecyclingcoalition

**Annual Conference
May 9-11, 2023
Kalamazoo Radisson**

**Kerrin O'Brien, Executive Director
KOBrien@MichiganRecycles.org**

