



Mental health strategy and services in Finland

Johanna Cresswell-
Smith
PhD Population Health
Associate prof.
Psychology

Terveysten ja
hyvinvoinnin laitos

14.4.2026

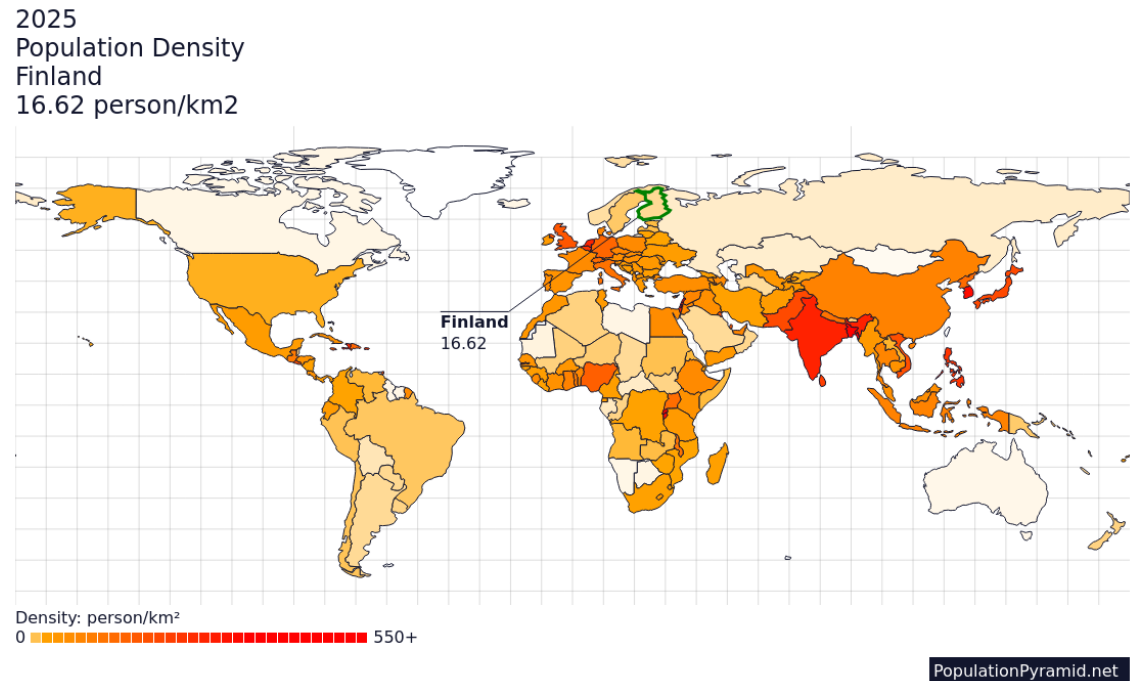


Finland

- Finland is one of the most northern and geographically remote countries in Europe, with dense woodlands covering nearly two-thirds of its area.
- Approximately 5.6 million population
- Life Expectancy in 2023: 81.9 years for males and 85.1 years for females (Official Statistics of Finland)
- Finland has a high GDP per capita and ranks 12th in the Human Development Index (Human development index, 2025)



14.4.2026



Finland in numbers



High Quality of Life: Finland consistently ranks high in global wellbeing indices, excelling in education, work-life balance, environmental quality, social connections, safety, and life satisfaction (OECD better life index)



Social Sustainability: The Finnish approach to wellbeing emphasizes social sustainability, ensuring fair access to resources, opportunities, and services for all citizens (Ministry of Social Affairs and Health)



68% of people in Finland reported to be in good health (OECD better life index)



Health and Safety: Finland has a robust healthcare system and high safety standards, contributing to the overall wellbeing of its population (Statista 2024)



Finnish Institute for Health and Welfare

- The Finnish Institute for Health and Welfare (THL) is an independent state-owned expert and research institute
- THL's duties are established in the Finnish legislation.
- Our key duty is research and expert work: to prevent illnesses and social problems; develop the welfare society; support the social welfare, health care system and the social security system.
- We operate under the Ministry of Social Affairs and Health



Our Vision

So that
we can
all thrive

Our Mission

Defending well-being,
health, and safety
in a changing society.



Planetary Health and wellbeing



Our research work is divided into four research programmes:

1. Society
2. Services and the support of society and community
3. Population
4. Living environment



Mental Health Team (THL)

- Comprises specialists in various fields, including mental health promotion, mental health services and systems, forensic psychiatry, mental health disorders, child and adolescent mental health, and crisis and trauma support.
- Implementation of the Mental Health Strategy 2020-2030



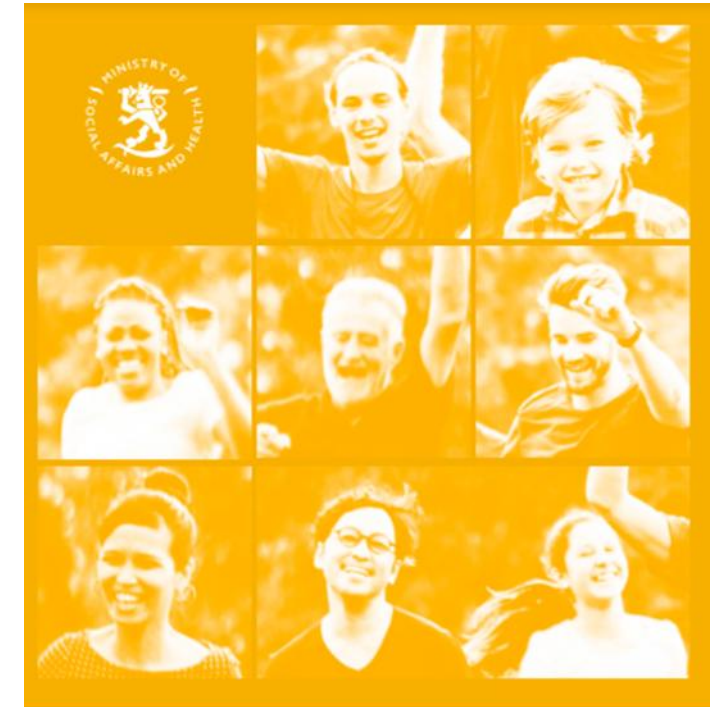
14.4.2026



Mental Health Strategy 2020-2030

Background

- Preparation was started by the Ministry of Social Affairs and Health in 2018
- An expert group was appointed for the preparation of the strategy in August 2018, supported by a separate steering group
- Expert group comprised of 14 members from the service system, NGOs, universities and governmental organizations
- Consultations and open hearings were held throughout the process



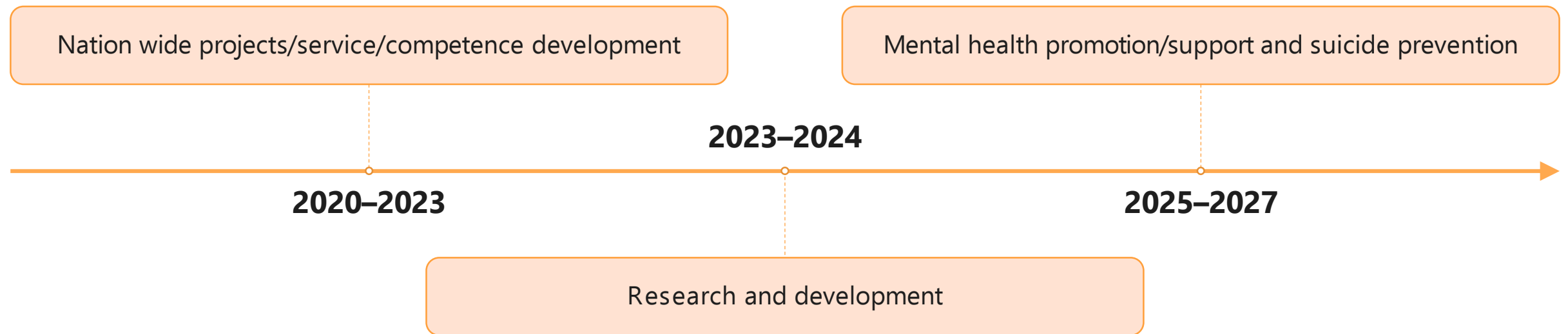
**National Mental Health Strategy and
Programme for Suicide Prevention
2020-2030**

PUBLICATIONS OF THE MINISTRY OF SOCIAL AFFAIRS AND HEALTH 2020:15

Priorities of the health and social services reform



Mental Health Strategy – implementation in different phases



Implementation components



Projects

Online courses

Reports

Guides

Training

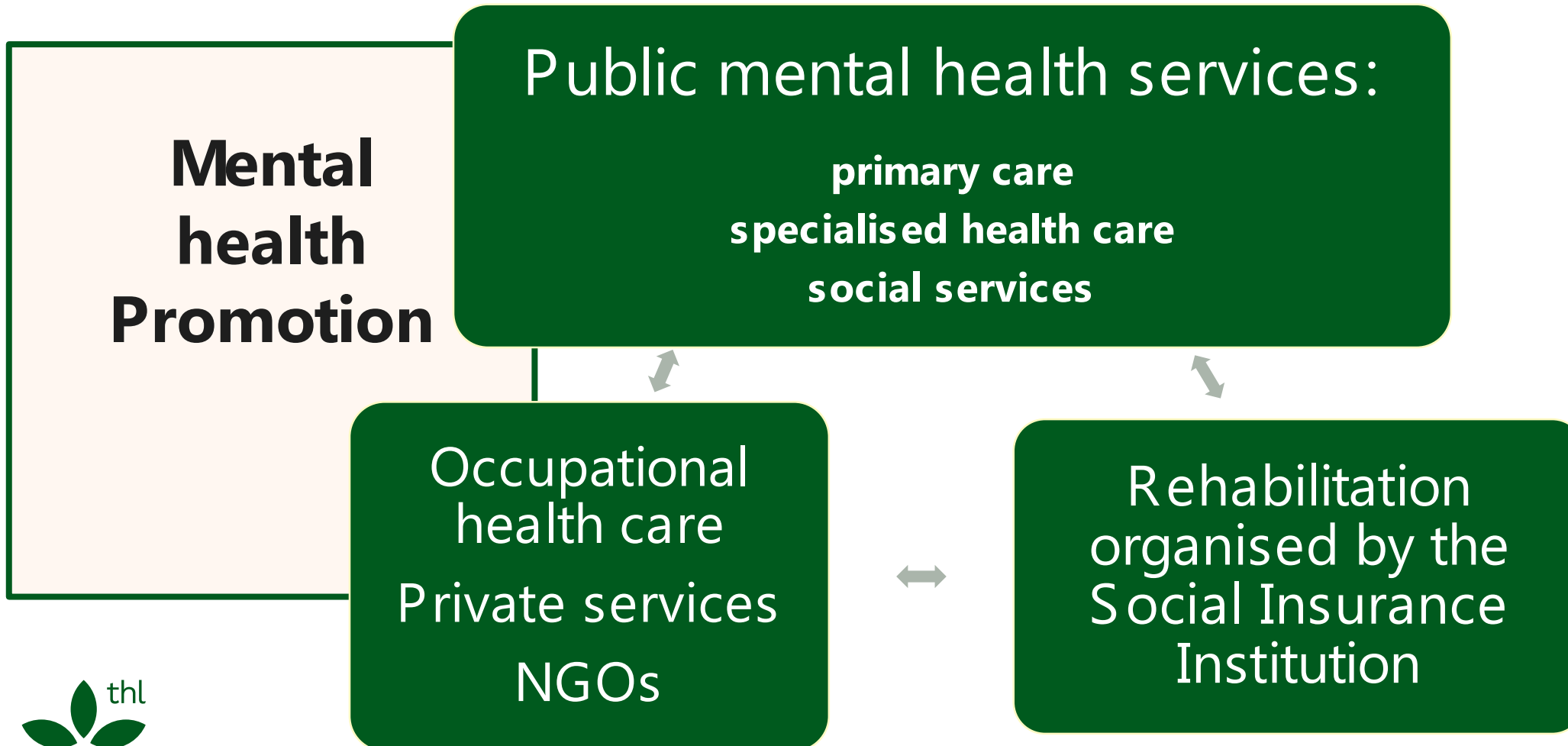
Surveys

Implementing
models

Awareness raising

Recommendations

Mental health services in Finland





Mental health treatment

Prevention of mental ill health

Mental Health Promotion

Mental Health Strategy - Five areas of focus



Mental health as human capital

Positive mental health and **mental health promotion** for a well-functioning daily life.



Mental health for children and young people

Positive mental health for children and young people, equal opportunities, supportive environments, safeguarding vulnerable, reducing poverty and social exclusion.



Mental health as a right

Universal human rights and fundamental rights of the Constitution of Finland, self-determination, equity, and addressing mental health related **stigma** and discrimination.



Appropriate, broad-based mental health services

Meeting individual's needs via effective, high-quality which are, appropriate and accessible.

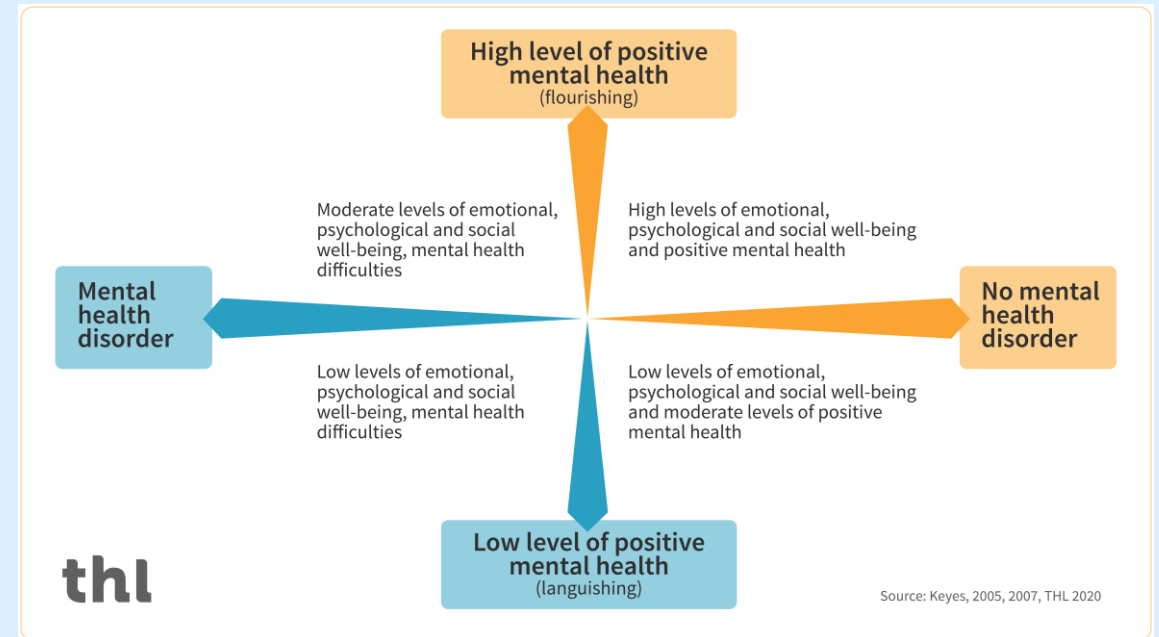


Mental health management

Mental health in **all decision making across all sectors**, including social and healthcare sectors as well as occupational sector.

1. Mental Health as Human Capital

- Highlights the significance of **positive mental health** and importance of **mental health promotion** to support a well-functioning daily life.

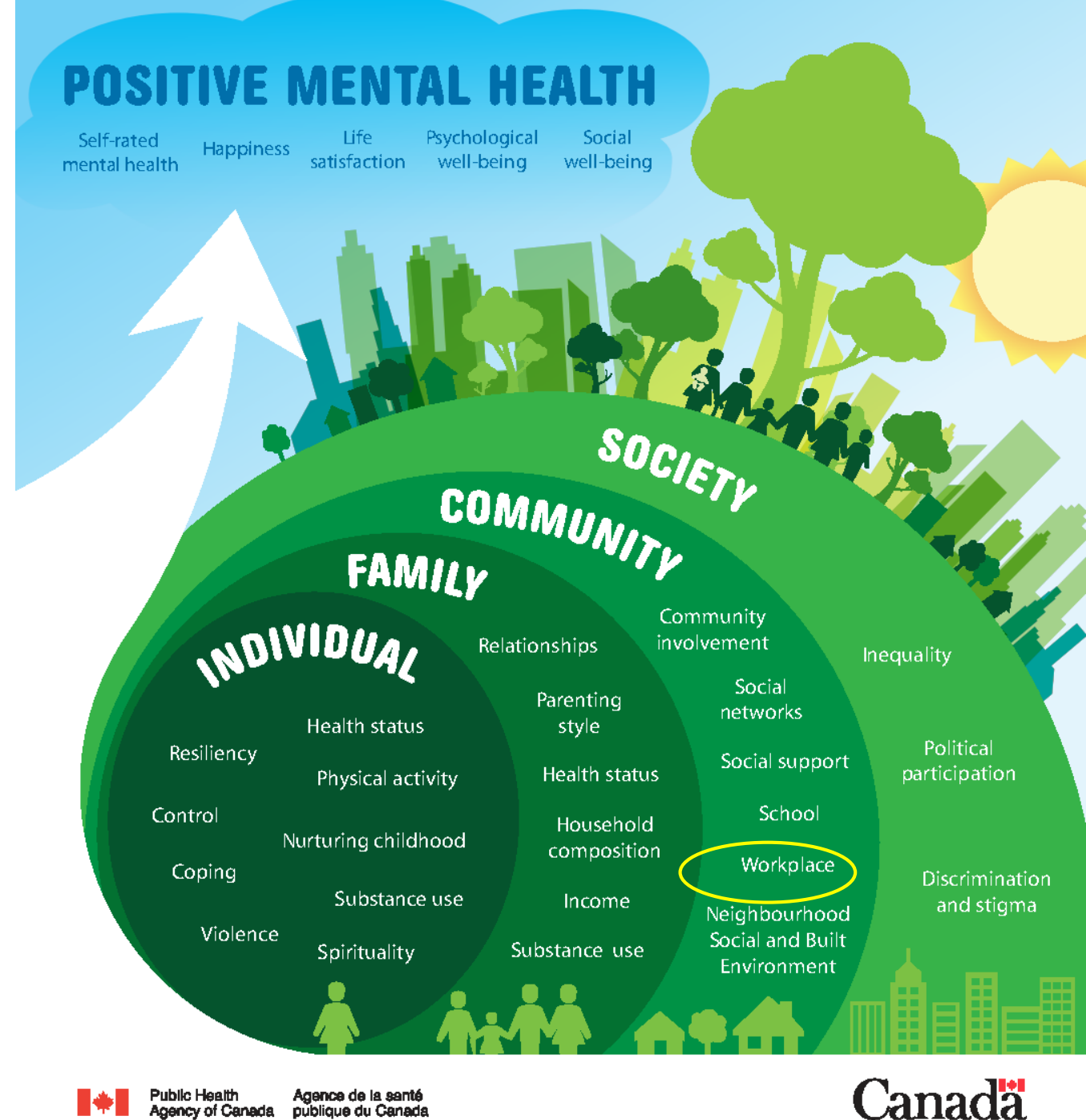




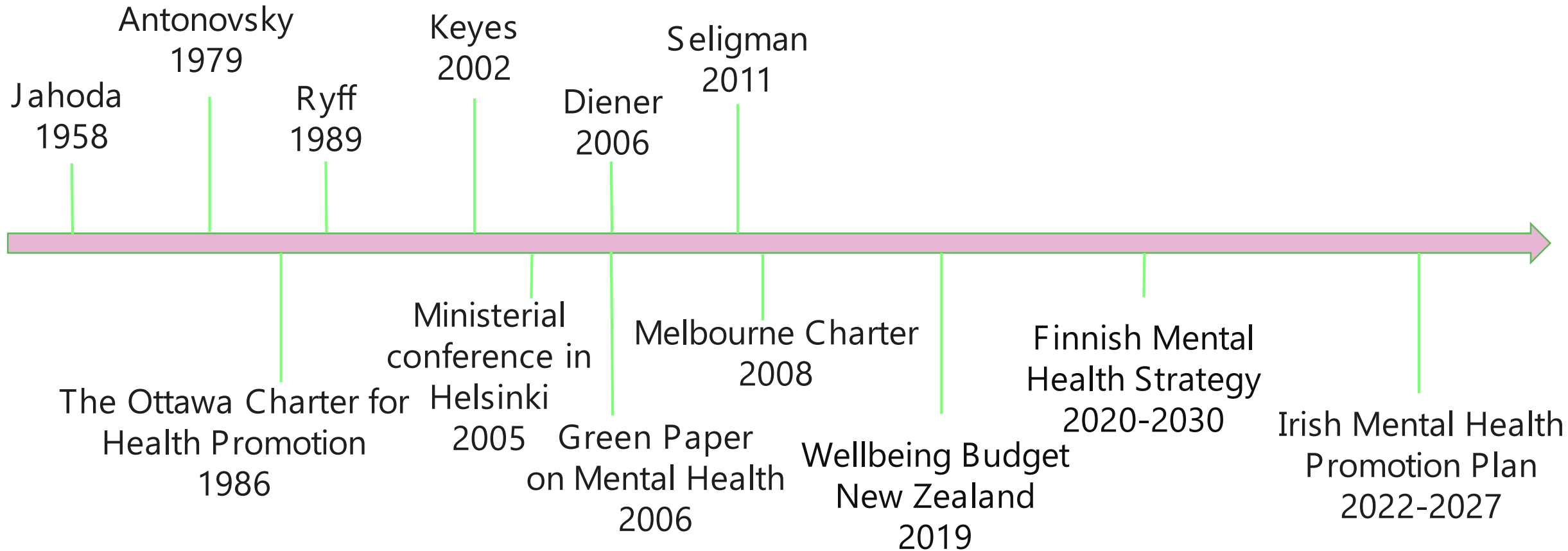
Mental health is not just an individual issue!

It's influenced by family dynamics, community engagement, and societal structures.

Promoting well-being requires action across all these layers.



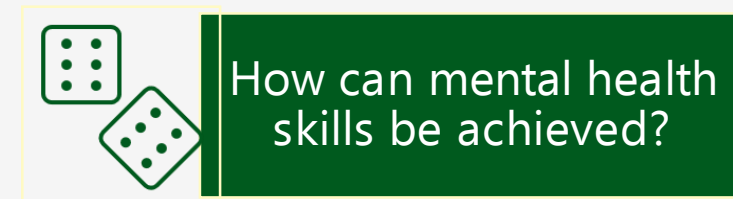
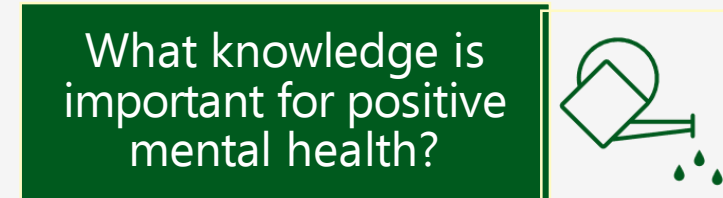
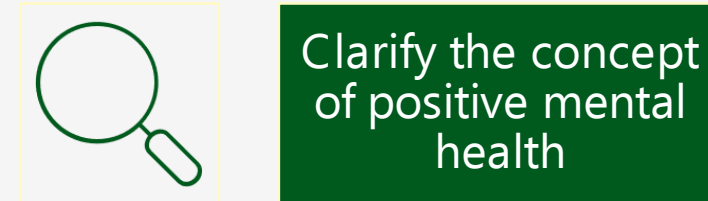
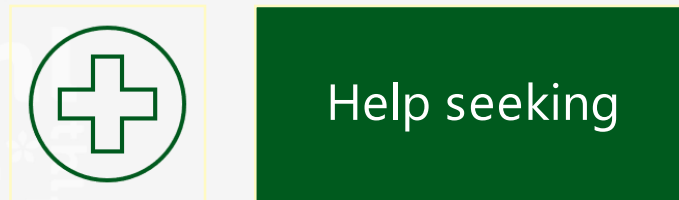
Definitions positive mental health, and policy focus



Mental health literacy

Traditional approach

Development needs



Cresswell-Smith, Solin, Wahlbeck, Tamminen (2022)

For the mental wellbeing of children and young people

Working together with National Child Strategy

Connection between the National Mental Health Strategy and other national strategies and programmes



In cooperation:
 ministries
 Finnish Institute for Health and Welfare
 Finnish Institute of Occupational Health
 municipalities
 wellbeing services
 counties
 NGO's
 universities
 EU and international cooperation



School Health Promotion study

- Study monitors the well-being, health and school work of Finnish children and adolescents since 1996.
- The aim of the SHP study is to strengthen the planning and evaluation of health promotion activities at school, municipal and national levels.
- [The SHP study](#) is carried out nationwide.
- Nearly 250 000 respondents participated in the survey 2023

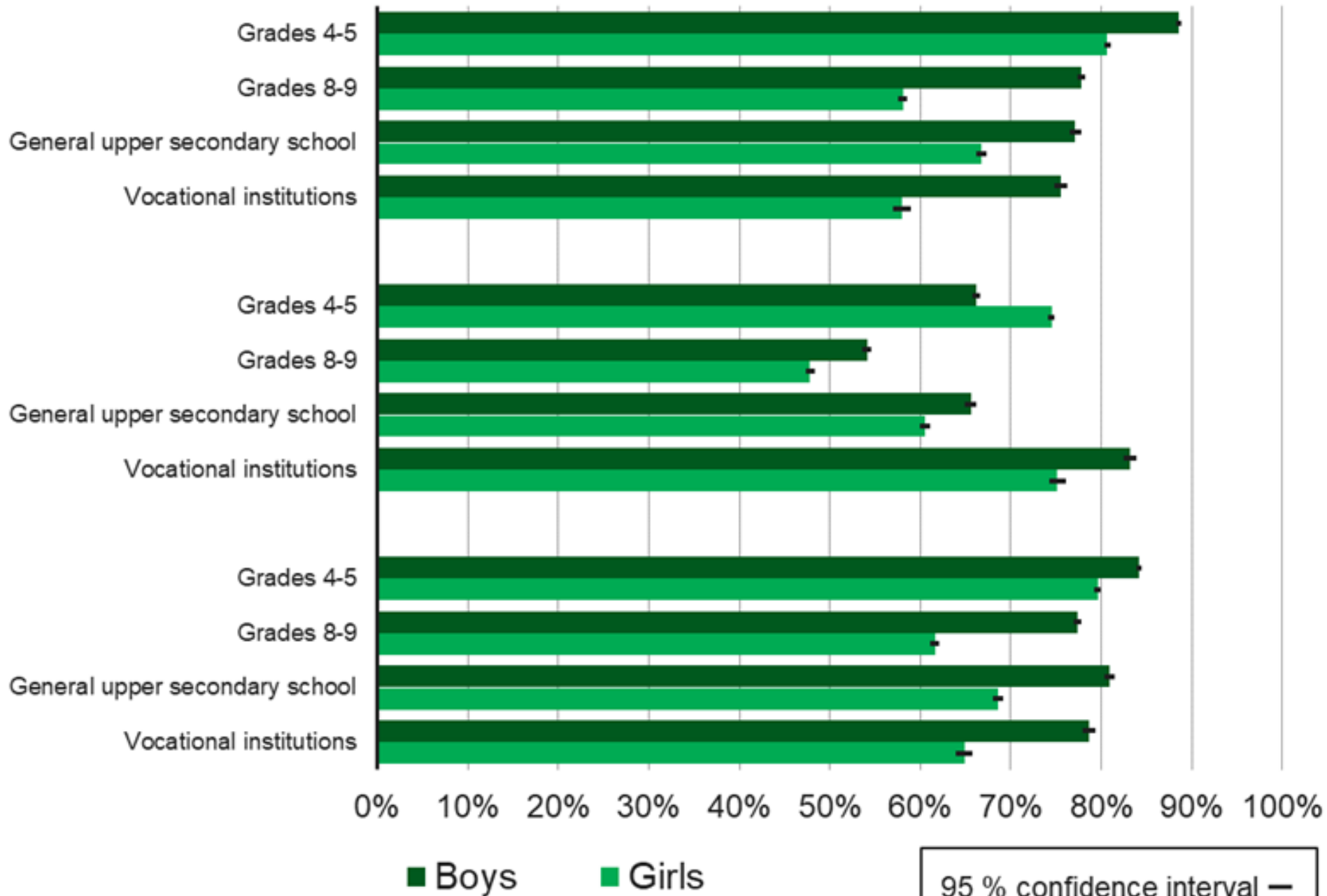


Results

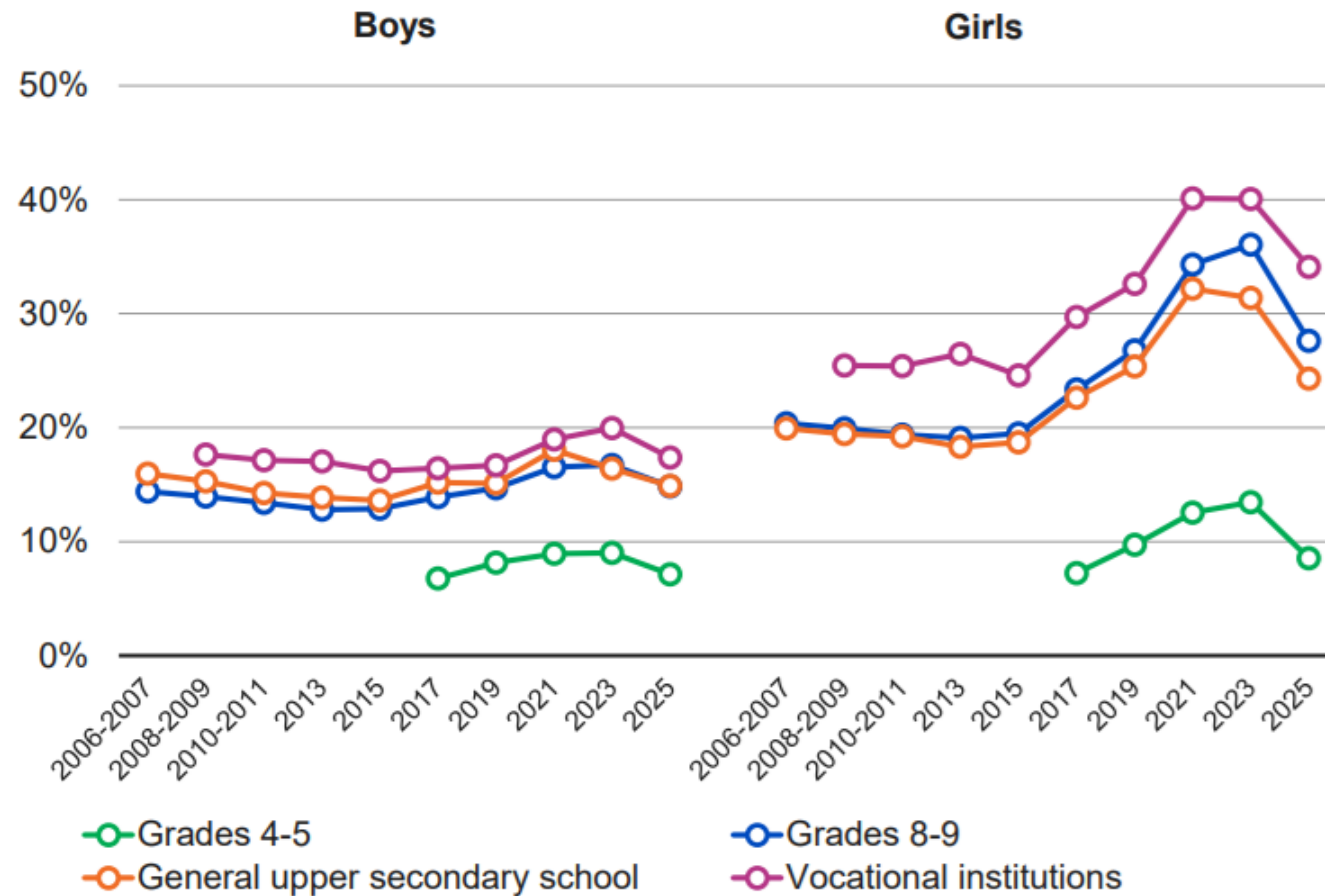
Satisfied with life at the moment

Likes going to school

Can discuss own issues with parents often or quite often

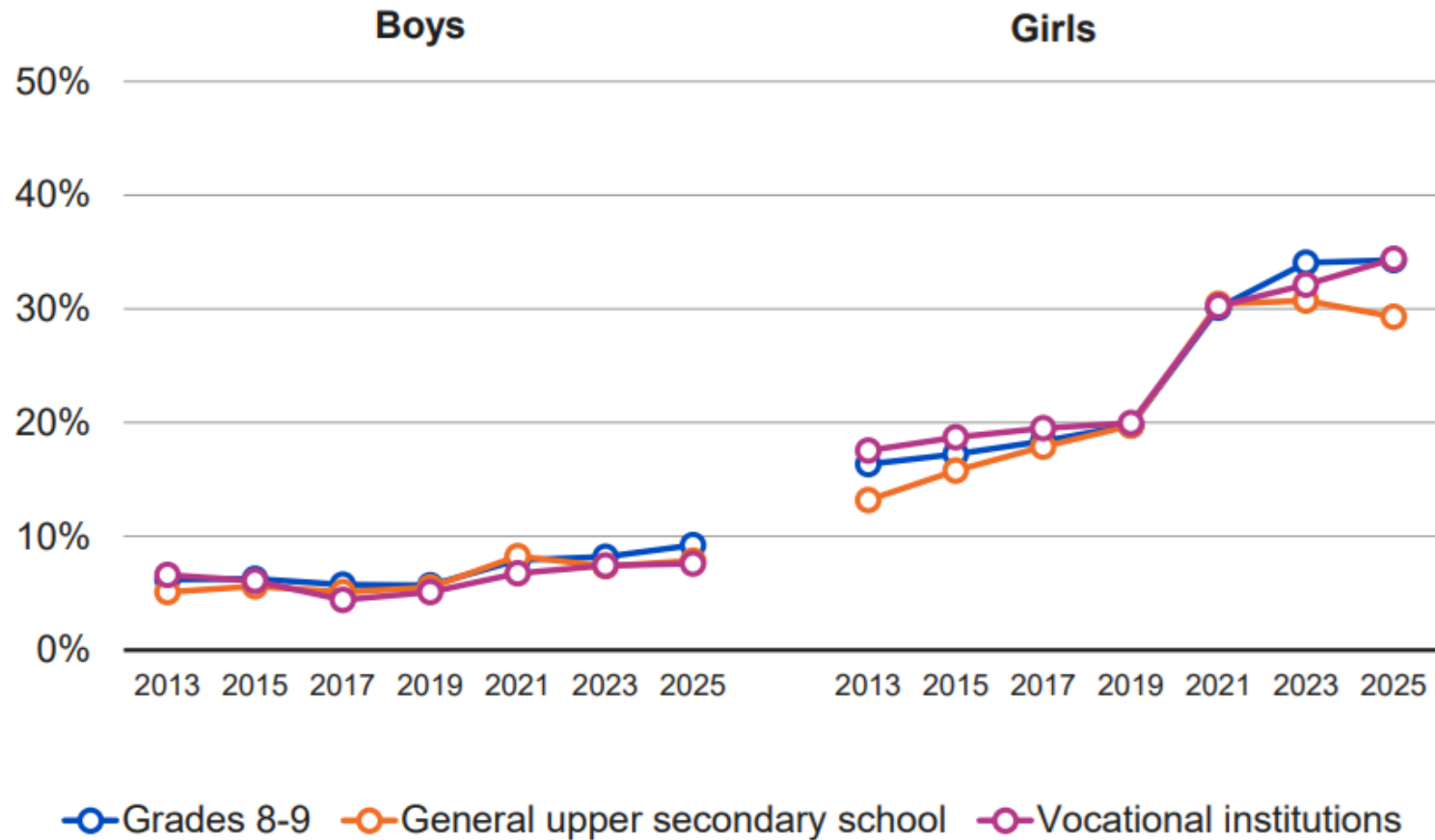


The proportion of children and young people considering their health as average or bad by gender and school level in 2006–2025, %.



17.9.2025 THL, the School Health Promotion study

The proportion of young people who had experienced moderate or severe anxiety in the past two weeks by gender and school level in 2013–2025, %. (GAD7 sum indicator)



New law: Mental health care for young and children 2025

- Starting from May 1, 2025,
- In primary healthcare
- For young and children under 23 years old
- Who have the need for such psychosocial treatment
 - short-term psychotherapy or
 - structured and time-limited psychosocial treatment (based on psychological interaction)
- Treatment must be initiated within 28 days



Gender diversity as a strength

- Strengthening the competence of professionals working with young people regarding gender diversity
- Research data on the well-being and resilience factors of gender minorities
- Gender Diversity: Young People's Well-being and Encounters in Social and Health Services

<https://urn.fi/URN:ISBN:978-952-408-398-0>



"The right to define for oneself the things that help to cope with everyday life and to receive the necessary support."

National recommendations for the use of digital devices for ages 0–13

- Content matters
- Discussions with children
- Support for parents
- Delaying of buying own devices



14.4.2026



3. Mental health as a right

- Founded on **universal human rights and fundamental rights of the Constitution of Finland**, this area safeguards the **right to self-determination**, building on principles of equity, and addressing mental health related stigma and discrimination.



Key objectives:

Accessibility and Equity:

- Mental health services should be available to everyone, regardless of their socio-economic status, geographical location, or background.

Integration with Other Services:

- Mental health services are designed to be closely aligned with other health and social services.

Rights-Based Approach:

- Individuals' rights to and within mental health care are recognised and upheld

Reducing Stigma and Discrimination:

- Efforts are made to combat stigma and discrimination associated with mental health disorders

Legislation and Policy:

- Ensuring that policies are in place to protect and promote mental health rights



Recognising and reducing stigma



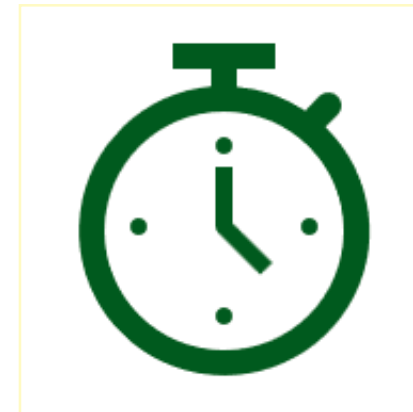
National Recommendations

- Raising awareness also for professionals
- Service users voice needs to be heard
- **Enhancing respectful interaction**
- Work with values and interaction for professionals
- Online course for professionals

Understanding the meaning of work as part of recovery



Everyone has the right to work
or study



Possibilities to work part time

Individual placement and support model (IPS)

Evidence-based model integrating job search and employment support directly into psychiatric care.

- National Pilot Launch (2020–2022/23)
- Piloted in five psychiatric service regions across Finland as part of Finland's National Mental Health Strategy (2020–2030)
- Aim was to reform vocational rehabilitation and improve employment outcomes for people with severe mental health disorders.

Results

Participation & Employment Outcomes

By Sept 2022: 542 clients enrolled in IPS services 42% gained employment in competitive labour markets→ Demonstrated strong feasibility and effectiveness in Finland

Evaluation Study (2020–2023) National evaluation shows: ≈ 50% of participants were employed at least once during follow-up periods (6–12 months)

Impact on Service Integration IPS strengthened collaboration between psychiatric services and employment support, showing that integrated models can shift psychiatric rehabilitation practices.

Multisector approach to mental health support

Public mental health services

- Organized by **21 wellbeing services counties**.
- **Five collaborative areas for healthcare, each with one university hospital**, have coordinative responsibilities and university hospitals with tertiary level services

Rehabilitation provided by the Social Insurance Institution (Kela)

- Psychotherapy
- Rehabilitation for children and their families
- Vocational rehabilitation

Occupational health care

- Main task is the promotion of health and safety at work and in the working environment and prevention of work-related diseases, but often includes primary healthcare and even some specialized services. Often organized by private healthcare companies.

Private services

- Psychotherapists
- Psychiatrists
- Occupational health care
- Housing for rehabilitation

NGOs

- Helplines
- Chats
- Psychosocial rehabilitation
- Walk in services
- Crisis work
- Mental health promotion etc.

Mental health services

Primary health care: mild symptoms, diagnostics

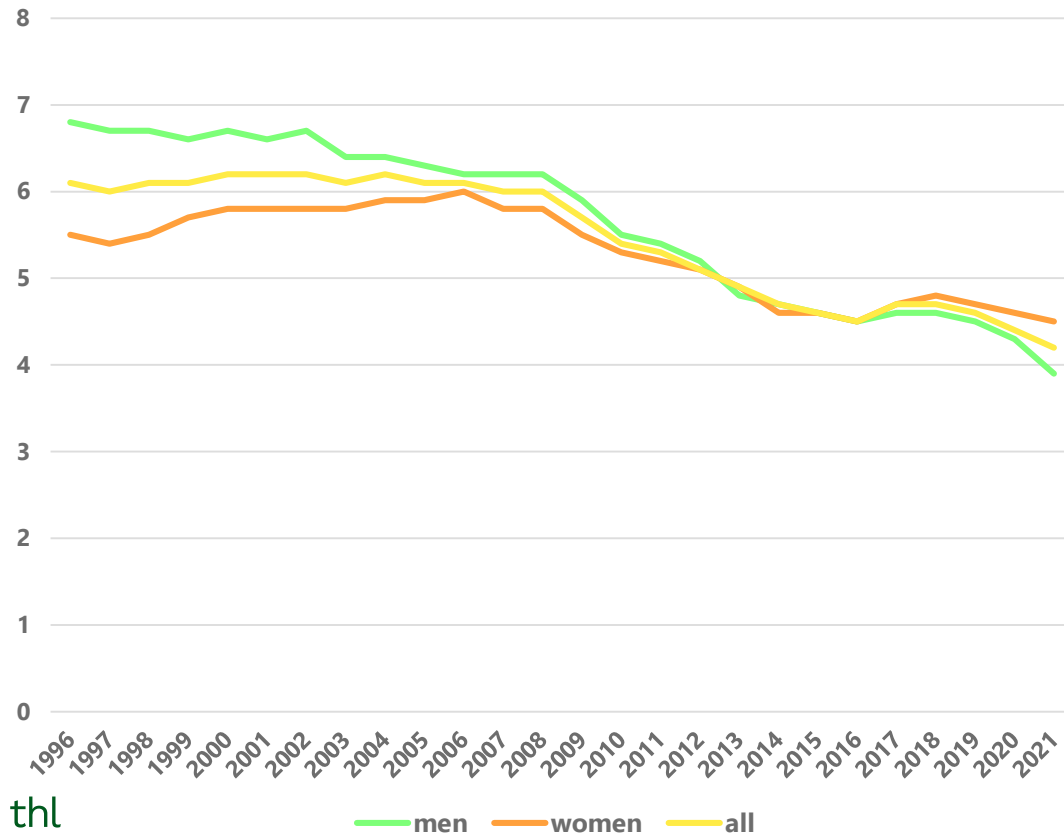
Specialised services: mental health disorders, specialised care

Inpatient and outpatient care: Reduction in inpatient care -emphasis is on outpatient treatment

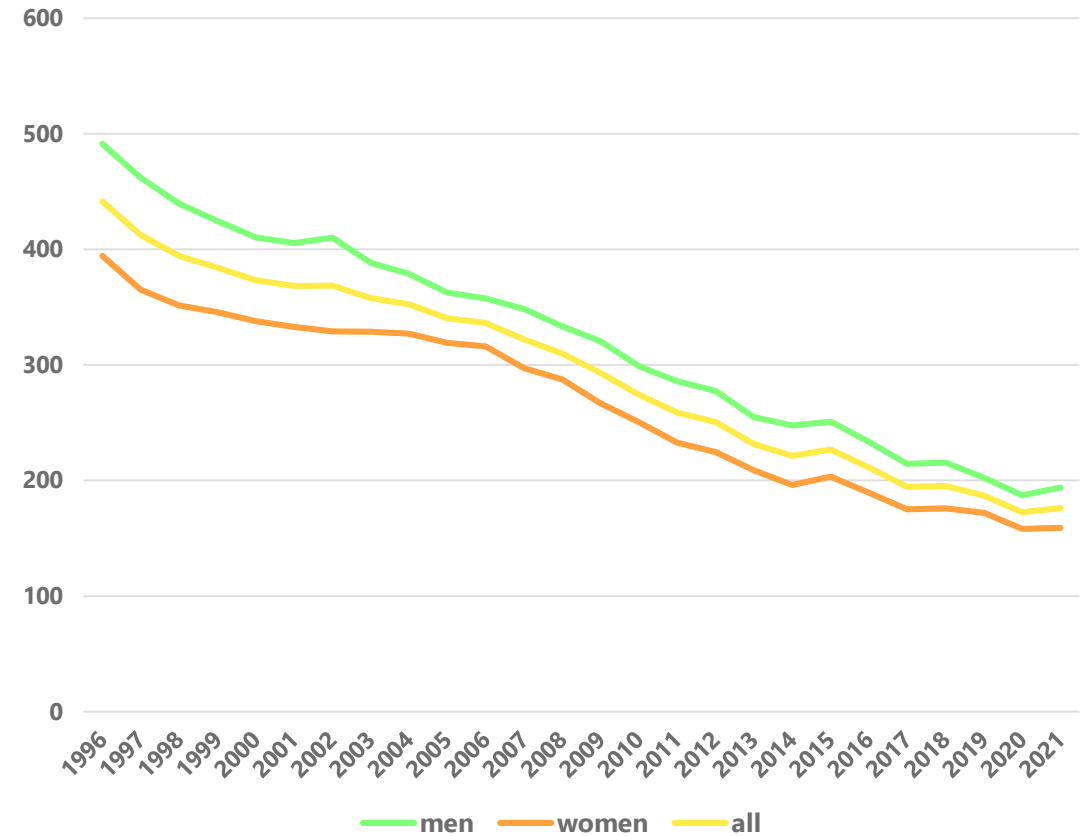
Supportive housing services - organised by public services and private companies/NGO's.

Psychiatric hospital treatment

Persons treated in psychiatric inpatient care /
1000 thousand inhabitants



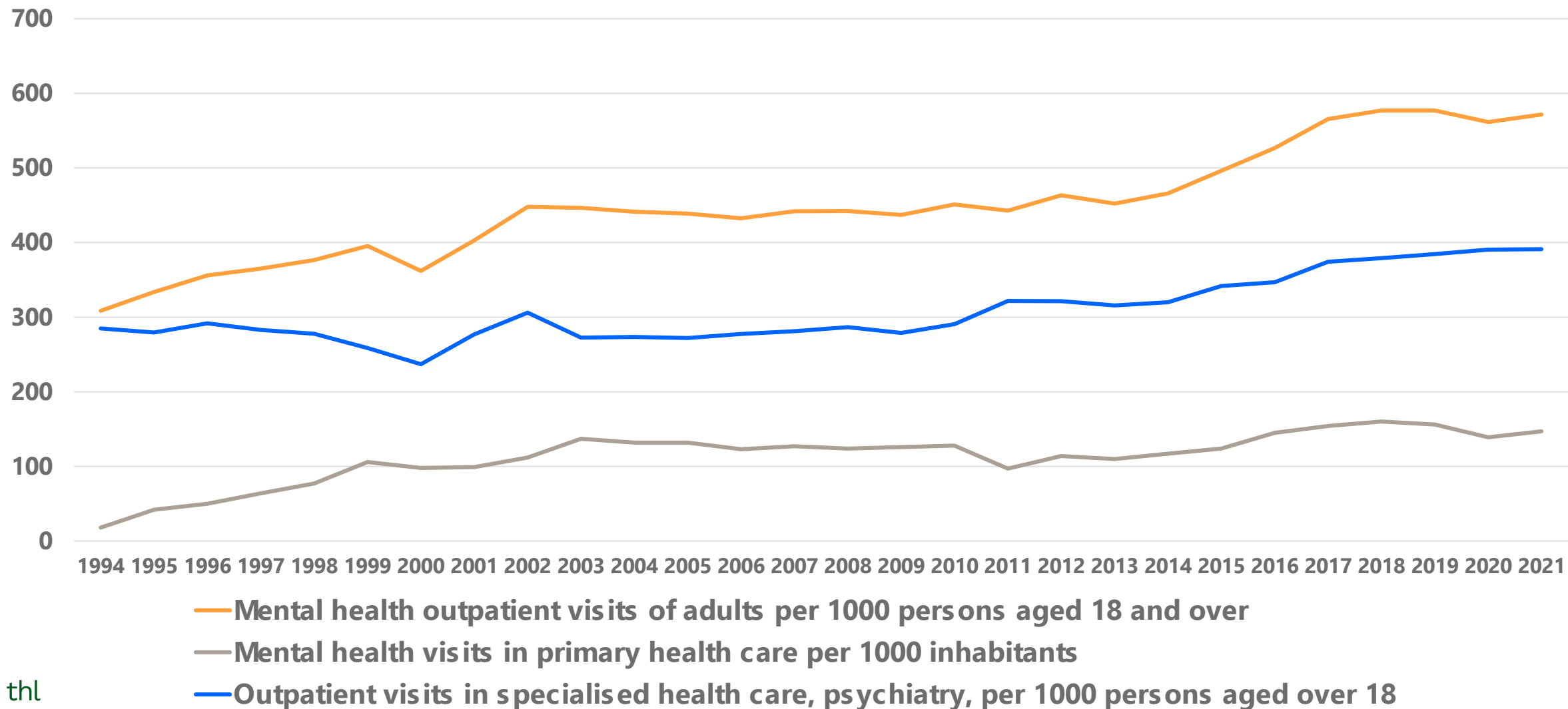
Psychiatric inpatient care, care days per 1000
inhabitants



14.4.2026

Jaana Suvisaari, THL, Mental health team

Outpatient services: adults



14.4.2026

Jaana Suvisaari, THL, Mental health team

Developing needs based services

- Developing new individually orientated approaches
- Primary and specialised services
- Experts of experience
- If you treasure it – measure it!



14.4.2026



High-Quality Care for Severe Mental Illness (SMI)

Diverse Services: Mobile, home-delivered, remote consultations, and digital solutions.

Evidence-Based Interventions: Psychoeducation, family interventions, CBT, cognitive rehabilitation, social cognition and social skills training, Individual Placement and Support (IPS) model.

Outpatient Treatment Models: Effective and cost-effective centralized treatment for first-episode psychosis; diverse psychosocial treatments for pervasive illness.

Regional Differences: Variability in implementation and availability of psychosocial interventions; ongoing development of care and service chains.

Survey Insights: Skilled personnel, desire for standardization, improved outpatient services, peer support, and expert-by-experience involvement.

Recommendations: Enhance care and service chains, continuity of care, diverse psychosocial treatments, goal-oriented rehabilitation, technology-assisted services, family involvement, expert-by-experience roles, physical health prevention and treatment, centres of excellence.



Patient-Reported Experience in Mental Health and Substance Use Services

First National patient experience survey

- Conducted in 2021 across 435 treatment facilities with 8794 outpatient and 1112 inpatient responses.

Positive Experiences: Most positive feedback related to respect and acceptance.

Areas for Improvement: Critical feedback on receiving information and inclusion of significant others in the treatment process.

Best experiences: reported in integrated mental health and substance use services. Involuntarily admitted patients had the most negative experiences.

Primary Development Need: Focus on improving information sharing with patients.



(Viertiö, S., Therman, S., Kuussaari, K., & Suvisaari, J. (2024). <https://doi.org/10.1002/mpr.70010>)

Recovery orientation framework

Connection

Empowerment

Meaningfulness

Hope

Individuality



Digital solutions, new opportunities or the emperors new clothes?

- **Digital Services vs. Human Interaction**
- **Mental Well-being:** Learned from childhood and supported by others.
- **Support:** Essential for recovery in mental health issues.
- **Professional Help:** Sometimes necessary; professionals aid in using digital services and provide feedback.
- **Costs:** Digital services are costly to maintain and develop.

Lots of potential, but transparent frameworks are needed to evaluate and fund digital solutions effectively.



Outi Linnaranta/Teija Stand, THL 2022

14.4.2026



Digital solutions!

- The majority are aimed at the adult population and for the prevention or treatment of mild symptoms.
- VR apps e.g. exposure therapy
- Self-help portals
- Digital treatments/therapy
- Mobile health and wellbeing services
- Chat and telephone support
- Web based peer support
- Digital tools for diagnostics
- Health trackers
- Therapeutic games/gamification

Linnaranta O, Pelkonen I. 2023 THL
<http://urn.fi/URN:ISBN:978-952-408-067>



14.4.2026



59

Mental health in all policies

Connection between the National Mental Health Strategy and other national strategies and programmes



Mental Health Impact Assessment

A structured process used to evaluate the potential effects of a project, policy, or program on mental health and well-being. It identifies both positive and negative impacts and provides recommendations to enhance mental health outcomes

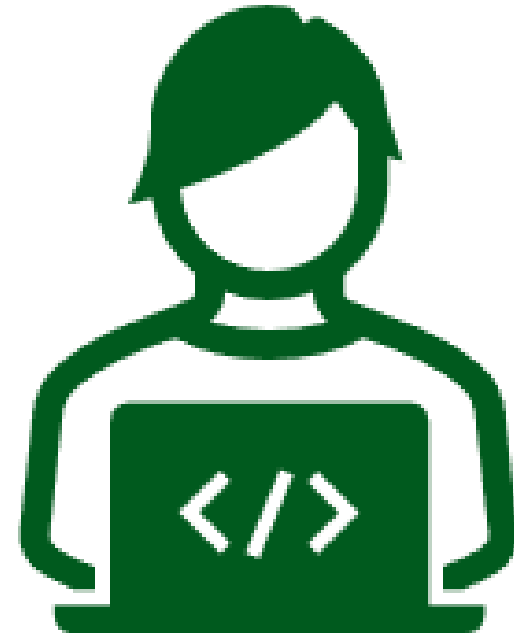


14.4.2026



Implementation of operational codes

- National Data Collection on treatment, diagnoses, care/treatment times and durations, etc.
- Data-Driven Management Regionally and Nationally
- For all health care professionals (public sector)



Mental health in the workplace

Promotes mental well-being and working capacity.

- **Digital Toolkit:** Evidence-based tools, like tests and coaching, are available to workplaces for preventing mental health issues.
- **Workplace Culture:** Emphasis on fostering supportive environments through collaboration, problem-solving, and better work practices.
- **Legal Framework:** Workplaces must assess psychosocial risks and implement management systems.
- **Shared Responsibility:** Mental health is a collective effort involving employees, supervisors, and occupational healthcare.



Suicide prevention programme

Prepared by the National Suicide Prevention Network including representation from the service system, NGOs, universities and governmental organisations

Seven areas of focus with 36 suggested measures including:

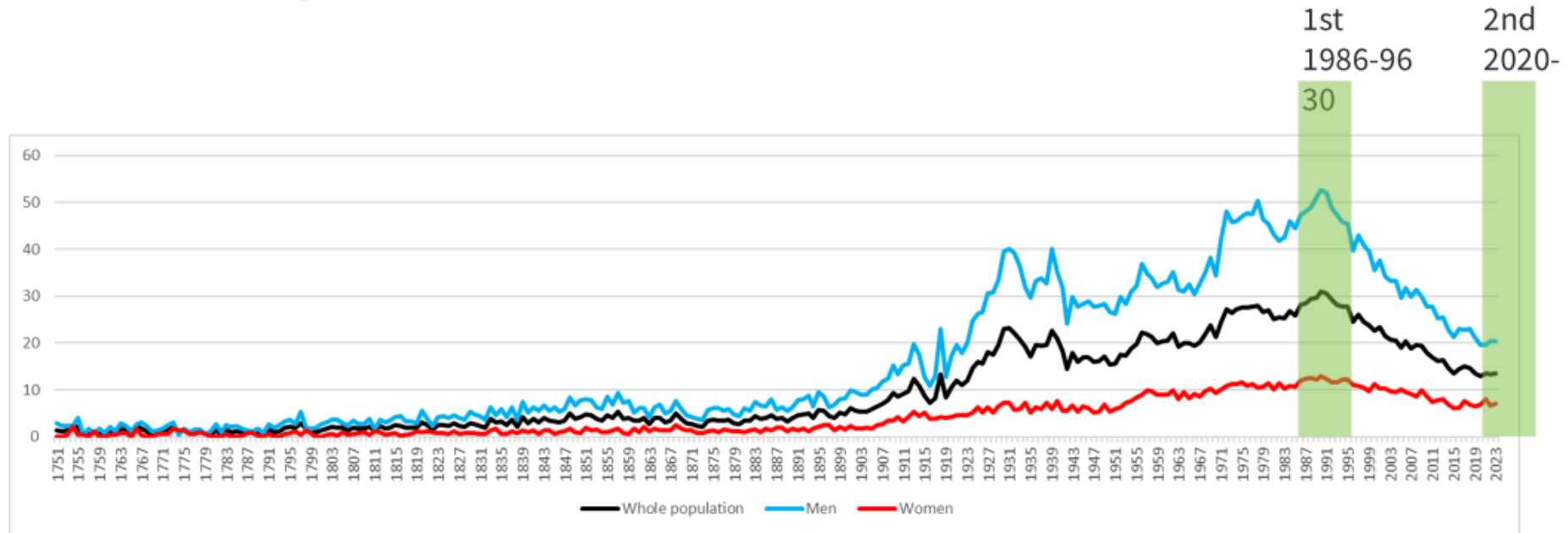
- Awareness raising
- Impacting the means of suicide
- Early intervention
- Supporting risk groups
- Developing care options
- Increasing media competence
- Strengthening knowledge basis and research



Long history of suicide data collection

Suicide prevention in Finland

Two nationwide programmes.



Awareness raising: digital suicide prevention courses

- [Suicide prevention online courses](#)
 - Finnish
 - Swedish
 - English
- Guidelines for suicide prevention
- Suicide Prevention Toolkit for Media Professionals

Suicide prevention online course

The purpose of the online course is to increase participants' skills in interacting with people at risk of suicide, identifying the risk of suicide and bringing it up. The online course also offers specific course themes for professionals, such as planning the treatment of a self-destructive patient for health care professionals. The online course is open and free of charge for all interested parties. Entry requires registration.

The course is available in Finnish, Swedish and English.

[Log in to the online course.](#) 

Improved research on suicide prevention

- Research on new digital methods for suicide prevention.
- Extend accident investigations, including "psychological autopsy" methods, to suicides—initially for young people, and eventually for all suicides occurring during or within a month of treatment.
- National suicide registry to monitor and evaluate the quality of suicide prevention and enable suicide research.
- Gather national, multidisciplinary expertise in suicide research to strengthen and increase its impact.
- Initiate a multidisciplinary suicide research program.



Help seeking prior to suicide

According to the Finnish Institute for Health and Welfare (THL):

- approximately 30% of individuals who die by suicide in Finland have visited healthcare services within two weeks prior to their death.
- approximately 40% of individuals who die by suicide in Finland have visited healthcare services within one month prior to their death.
- approximately 60-70% of individuals who die by suicide in Finland have visited healthcare services within the year prior to their death.
- **The leading cause for not talking about suicide is that no one asked**

Myths about suicide

1. Talking about suicide encourages it.

Fact: Open discussion can reduce suicidal thoughts and save lives.

2. People who talk about suicide are just seeking attention.

Fact: They may be reaching out for help and should be taken seriously.

3. Suicide is always impulsive and happens without warning.

Fact: Most suicides have warning signs.

4. Only people with mental health disorders are suicidal.

Fact: Many who die by suicide do not have diagnosed mental illnesses.

5. Once someone is suicidal, they will always feel that way.

Fact: Suicidal thoughts can be temporary and treatable.



Do you have a national suicide prevention programme in your country?

Please vote!

www.menti.com

Code: 7383 6807





Work continues until 2030



14.4.2026

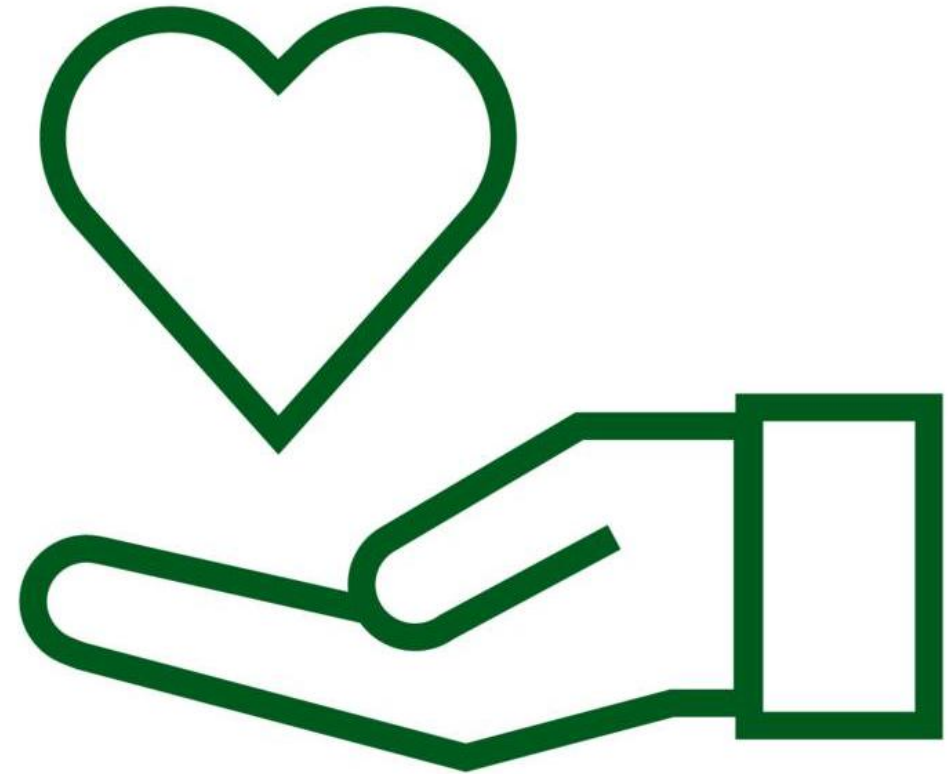
Next steps: Government Resolution on Mental Health Promotion

- Mental health in all policies
- All ministries together
- Also in [English](#)



Mental health support 2025-2027 -project

- Funding for NGO's
- Low-threshold help and support
- Experts by experince
- Guidance for mental health, substance abuse, addictions and other issues



THANK YOU !
KIITOS !
TACK!

Contact details:

Johanna Cresswell-Smith

Johanna.cresswell-smith@thl.fi

Saara Rapeli

Saara.rapeli@thl.fi



14.4.2026

We are
happy to
connect in
LinkedIn

